



Chalet Bel Air Courchevel 1850, France



What we love...

We love the wonderful mountain views from this apartment.

Well-located, well-equipped and very well-designed. What more could you ask for from your snowy bolthole?

Chalet Bel Air is a luxury ski apartment in Courchevel 1850 and guests of the property are also able to use Le Strato Hotel's spa facilities including a swimming pool, Jacuzzi, sauna, Hammam and gym.

A palette of earthy neutrals and comfortable, high-quality furniture and fittings, make this a property in which it is very easy to relax and

feel at home. From the sophisticated dining space to the homely breakfast area in the kitchen, to the super-comfy living spaces with over-sized sofas, there's space for everyone to kick back.

All of the en-suite bedrooms have been designed with the greatest of care, making each a cosy bolthole to retreat to at the end of the evening.

With Courchevel and all its glitz and glamour right on your doorstep, you'll never be short of somewhere to live the high life here. Enjoy!



Chalet Bel Air

Rooms

Chalet Bel Air sleeps 8 guests in four bedrooms.

Bedroom one
Double/twin bedroom with en-suite bathroom.

Bedroom two
Double/twin bedroom with en-suite bathroom and terrace access.

Bedroom three
Double/twin bedroom with en-suite bathroom.

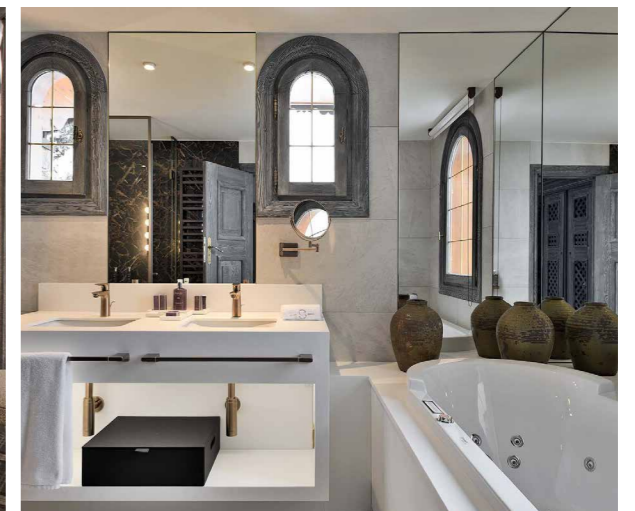
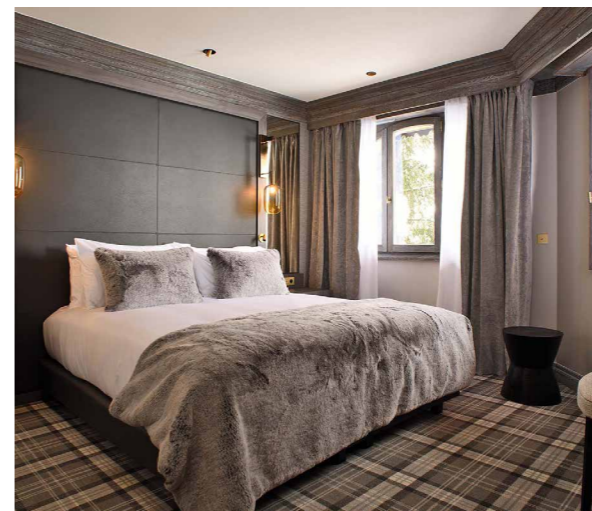
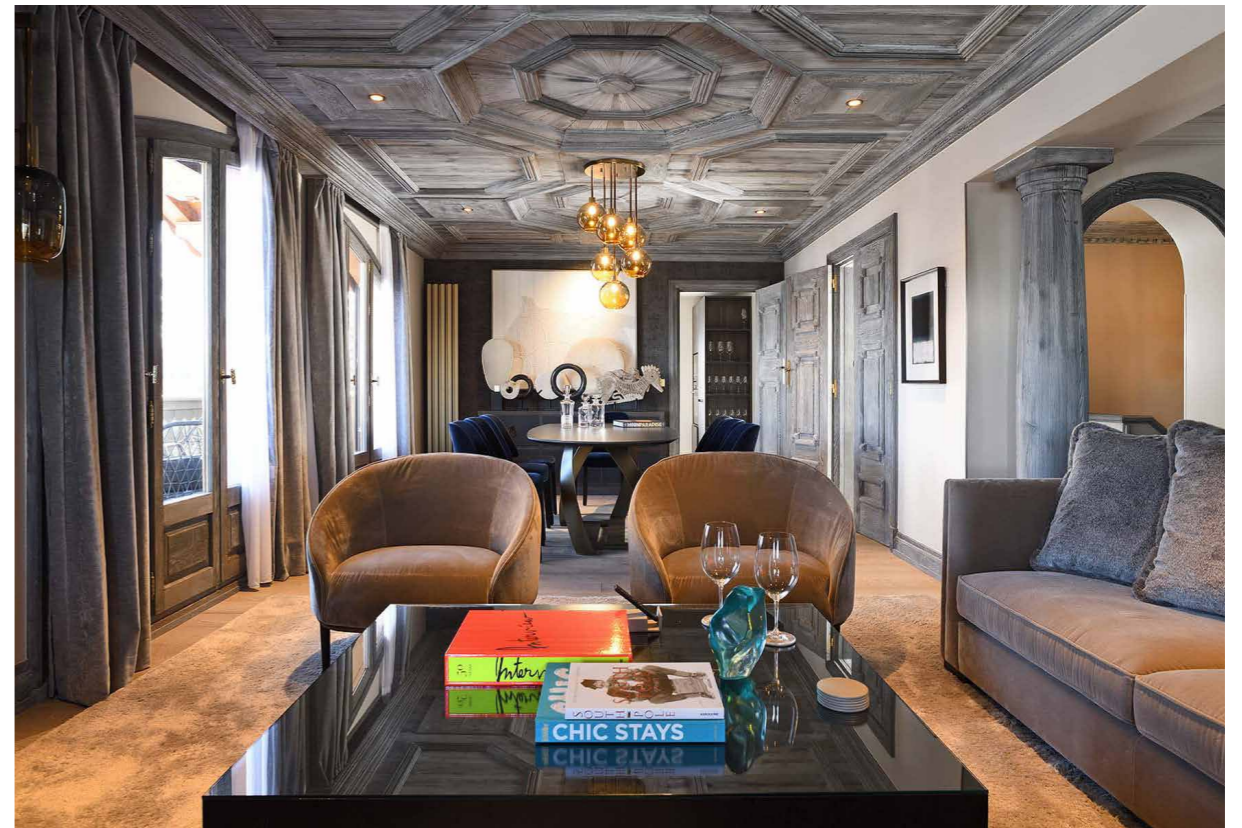
Bedroom four
Double/twin bedroom with en-suite bathroom and balcony.

Eating

The chalet is not far from some of Courchevel's best restaurants, such as the Michelin-starred Chabichou, which is one gourmands should not miss.

If you prefer, the apartment can be taken on a half-board basis at an additional cost, so you can eat in the nearby Le Strato Hotel's own restaurant, Baumanière 1850. The Michelin-starred chef and his team have created a menu that is inspired by the Mediterranean, but with an Alpine twist.

Alternatively, keen cooks will love the well-equipped kitchen at this luxury ski chalet if you prefer to cater for yourselves.





Chalet Bel Air

Kids

Children are welcome at Chalet Bel Air and its proximity to the slopes makes it a good choice for families.

Le Strato Hotel, nearby, has a lovely snowy-themed play area, complete with its own igloo, which younger children will enjoy. They'll also love splashing in the hotel's swimming pool after ski school.

Nannies and babysitters can be booked on request.

Staff

Firefly pre-arrival concierge service

Chalet staff include:
Daily housekeeping
In-resort driver service
Access to the staff at Le Strato Hotel

Additional staff such as nannies and babysitters can be arranged on request.

Location

This luxury ski chalet enjoys a ski-in/ski-out location onto the Cospillot piste and is just a few minutes chauffeured drive into the centre of town.

The nearest airport is Chambéry, approximately 1 hour 30 minutes drive, whilst Grenoble and Lyon airports are approximately 2 hours 10 minutes and Geneva airport is 2 hours 20 minutes drive away. Moutiers rail station is also just 30 minutes' drive.

There is also an altiport in Courchevel 1850 for those travelling by helicopter or private jet.

Facilities

- Ski-in/ski-out
- Balconies
- Wood burning fireplace
- Well-equipped kitchen
- Wifi

Access to the facilities at Le Strato Hotel including spa (sauna, steam room, Jacuzzi, indoor swimming pool), in-resort shuttle service, ski room and shop, restaurant and bar.

