



Chalet Chanrossa Courchevel 1850, France



What we love...

We love the wonderful location, close to both the slopes and the town and with all the facilities of the Le Strato Hotel on your doorstep.

Make yourself at home. This chic duplex apartment is as welcoming and cosy as it is sophisticated and stylish. Chalet Chanrossa is a luxury ski chalet in Courchevel 1850 that makes for the perfect base from which to explore all this charming resort has to offer.

This apartment is moments from the slopes and also just a short drive from all the bars and boutiques of the town centre. Guests of Chalet Chanrossa are also able to use Le Strato Hotel's spa facilities including a swimming pool, Jacuzzi, sauna, Hammam and gym.

Inside the chalet itself, the interiors are calm and relaxing. A neutral colour palette has been chosen

to create an atmosphere of quiet relaxation, so when you return from an energetic morning on the slopes you can put your feet up in the spacious living room with hot drinks and snacks and rejuvenate body and soul. Nearby is a cosy dining area that's perfect for both group breakfasts, and cosy dinners on nights when you just want to stay in and hunker down.

Each of the bedrooms is designed in the same neutral palette, but each has a bold splash of colour – one navy, one aubergine and the third a burnt orange – for a sophisticated but individual look. Your every comfort is taken care of here. Your only task is to make the most of it.



Chalet Chanrossa

Rooms

Chalet Chanrossa sleeps 6 guests in three bedrooms.

Bedroom one
Double/twin bedroom with en-suite shower room and balcony.

Bedroom two
Double/twin bedroom with en-suite bathroom and balcony.

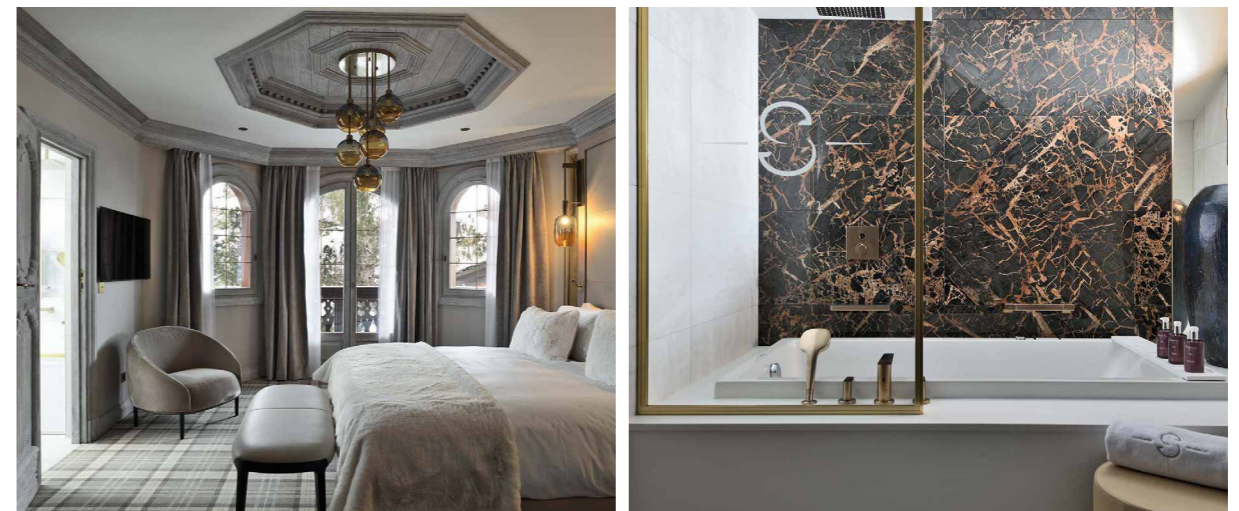
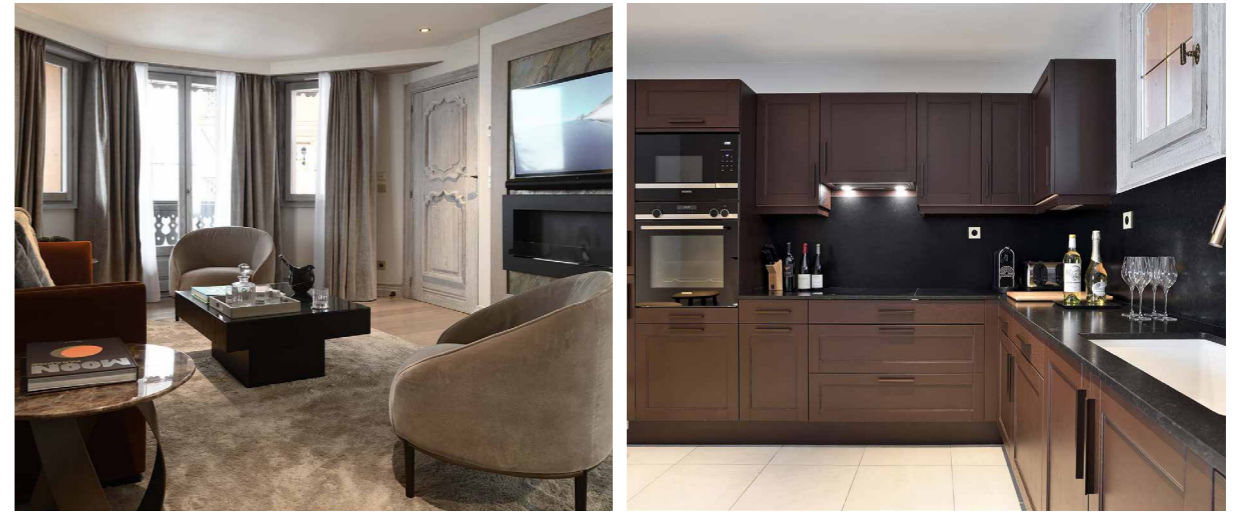
Bedroom three
Double/twin bedroom with en-suite bathroom and balcony.

Eating

The chalet is not far from some of Courchevel's best restaurants, such as the Michelin-starred Chabichou, which is one gourmands should not miss.

If you prefer, the apartment can be taken on a half-board basis at an additional cost, so you can eat in the nearby Le Strato Hotel's own restaurant, Baumanière 1850. The Michelin-starred chef and his team have created a menu that is inspired by the Mediterranean, but with an Alpine twist.

Alternatively, keen cooks will love the well-equipped kitchen if you prefer to cater for yourselves.





Chalet Chanrossa

Kids

Children are welcome at Chalet Chanrossa and its proximity to the slopes makes it a good choice for families.

Le Strato Hotel, nearby, has a lovely snowy-themed play area, complete with its own igloo, which younger children will enjoy. They'll also love splashing in the hotel's swimming pool after ski school.

Nannies and babysitters can be booked on request.

Facilities

- Ski-in/ski-out
- Balconies
- Fireplace
- Well-equipped kitchen
- Wifi

Access to the facilities at Le Strato Hotel including spa (sauna, steam room, Jacuzzi, indoor swimming pool), in-resort shuttle service, ski room and shop, restaurant and bar.

Location

This luxury ski chalet in the exclusive Bellecote area has ski-in/ski-out access onto the Cospillot Piste, and is just a few minutes drive from the resort centre.

Le Strato Hotel runs a complimentary ski shuttle service around the resort 24 hours a day.

The nearest airport is Chambéry, approximately 1 hour 30 minutes drive, whilst Grenoble and Lyon airports are approximately 2 hours 10 minutes and Geneva airport is 2 hours 20 minutes drive away. Moutiers rail station is also just 30 minutes' drive.

There is also an altiport in Courchevel 1850 for those travelling by helicopter or private jet.

Staff

Firefly pre-arrival concierge service

Chalet staff include:
Daily housekeeping
Access to the staff at Le Strato Hotel

Additional staff such as nannies and babysitters can be arranged on request.

