



## Chalet Floralie

St. Martin de Belleville, France



### What we love...

We love sipping gin and tonics in the fabulous Jacuzzi in the chalet's wellness suite, before heading upstairs for a gourmet dinner.

One of the Alps' best kept secrets, the beautiful village of St. Martin de Belleville is where you'll find Chalet Floralie, from which the expansive Three Valleys ski area is yours to explore. Situated just 50 metres from the ski lift, you'll have all the ski convenience you could ask for, coupled with the serene quiet of a lesser known Savoyard village.

Combining rustic tradition with contemporary styling, Chalet Floralie is a luxurious haven for up to 18 people. After a refurbishment led by London-based interior designer Juliette Byrne, the property oozes Alpine chic from every nook and cranny. Take your pick of places to put your feet up – from the cosy library to the sofa in front of the fire; the huge living area overlooking the mountains, or curled up in the TV lounge. Comfort is the lay of the land here.

The bedrooms themselves are also fabulous, strewn with faux-fur throws and soft pillows, and all with en-suite facilities. But if you're keen on some alternative forms of relaxation, just head downstairs to the wellness suite with sauna, shower and Jacuzzi (available when you book the chalet or the chalet and penthouse as one).

With a games/TV room full of board games, toys, books and DVDs, Chalet Floralie is perfect for those wanting entertainment on tap, in addition to all those lovely nooks in which to enjoy a post-ski snooze...

Chalet Floralie is rented as one property (chalet + penthouse). But in non-peak weeks, the chalet alone can be rented (sleeping 14 people); or the penthouse alone (sleeping 4 people). The penthouse has its own private entrance, two en-suite rooms, a sitting room and kitchen/diner.



# Chalet Floralie

## Rooms

Chalet Floralie sleeps up to 18 people across the main chalet and its penthouse apartment.

### The chalet

**Bedroom one**  
Super-king/twin bedroom on the ground floor; en-suite bathroom.

**Bedroom two**  
Super-king/twin bedroom on the ground floor; en-suite shower room and separate WC.

**Bedrooms three**  
Super-king/twin bedroom on the first floor; en-suite shower room.

**Bedroom four**  
Super-king/twin bedroom on the first floor; en-suite bathroom, access to balcony.

**Bedroom five**  
Super-king/twin bedroom on the first floor; en-suite shower room.

**Bedroom six**  
Bunkroom to sleep 4 in adult size bunks (though most suited to children); en-suite shower room.

### The penthouse

**Bedroom seven**  
Queen-size/twin bed; en-suite shower room. Shared kitchen and dining area.

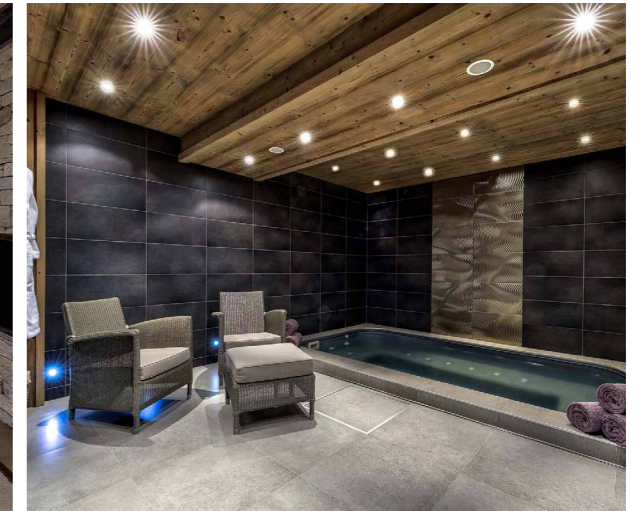
**Bedroom eight**  
Master bedroom with super-king size bed; en-suite bathroom, sitting room and balcony. Shared kitchen and dining area.

Please note that the Penthouse can be taken separately on a self-catered basis during non-peak weeks and does not include access to the wellness area.

## Eating

The wood-panelled dining room in Chalet Floralie is pleasingly cosy, with seats on one side and a bench sofa lining the other side. Candlelit in the evening, an intimate scene is set for dinner, which will be tailored for your party and prepared by your private chef.

Each day you'll enjoy mountain breakfasts and sumptuous afternoon teas and on five evenings, you'll gather with your party to sit down to a delicious evening meal served with wine and expertly prepared by your private chef. On one evening you will enjoy a Savoyard style buffet. On the chef's night off your chalet host can recommend the best restaurants and make reservations for you.





## Chalet Floralie

### Kids

One word: Jacuzzi. You'll struggle to get them out once they're in, but once they're out, there's plenty of places for them to play in Chalet Floralie. Numerous toys, books and games will help them burn off the last of the day's energy, and the TV room makes the perfect chill-out zone after dinner (perhaps with popcorn).

The slopes are near enough for getting to ski school nice and quickly, or just heading out into the snow for a spot of sledging or snow angel-making.

You can choose for children to eat with you, or enjoy high tea a little earlier – it's up to you. Cots are available should you need them and nannies and babysitters can be arranged on request.

### Location

Chalet Floralie is located in St. Martin de Belleville in the Three Valleys ski area, just a minute's walk from the slopes and lifts. The village centre is a 5-minute walk away, whilst the nearest ski lift is just 50 metres from the chalet.

The nearest train station is Moutiers, 30 minutes' drive away. The nearest airports are Lyon, 2.5 hours away, and Geneva, just over 2 hours away.

### Staff

Firefly pre-arrival concierge service

Chalet staff include:

- Chef
- Chalet hosts
- Daily housekeeping
- In-resort concierge service

Additional staff such as nannies and massage therapists can be arranged on request.

### Facilities

- Indoor Jacuzzi
- Sauna and shower
- Games room with home cinema and table football
- South-facing terrace
- Ski and boot room with heated racks
- Books and DVDs
- Games, toys and sledges
- TV/DVD player with surround sound
- Bang & Olufsen entertainment system
- Garage
- Fireplace
- Wifi

