



## Skyfall Penthouse St. Christoph, Austria



### What we love...

We love the interiors for Chalet Skyfall. It has the ultimate luxury combined with homely accessories, which makes this a really lovely property to just enjoy 'being in'.

Every now and again you stumble across a real hidden gem in the world of luxury ski chalets, and Skyfall is one of them - the very embodiment of luxury and so exclusive it's the first chalet to be built in St. Christoph for 50 years.

Only the highest standards have been used when designing the fabulous interiors. Antique wood and beautiful stone are softened by sumptuous soft-furnishings and one-off pieces of furniture that give Skyfall its eclectic character.

Uniquely set into the mountainside, Skyfall Penthouse occupies the top two floors of this traditional building, so returning skiers can simply glide back to the property from the slope.

The living room is an open and sociable space, perfect for lounging in with friends and family. There is ample space for everyone to kick back in comfort. Next to this, a dining room with a long, refectory-style table creates the perfect setting for enjoying food and fun, fuelled by excellent house wines and innovative menus created by your private chef. There's also a spacious eat-in kitchen for less formal meals

and an impressive cinema room where you can lose yourselves in a film.

Upstairs, beautiful bedrooms in muted shades with throws and cushions piled high on oh-so-comfortable beds are a welcome retreat at the end of a tough day's skiing and socialising. As you'd expect, bedrooms and bathrooms are all finished to five-star hotel standards, yet you can enjoy all the quiet and privacy that a private apartment has to offer.

As a guest at Skyfall Penthouse, you're at liberty to make use of the facilities at the nearby Alberg Hospiz Hotel, a 5 minute stroll away, which include a full spa with a swimming pool, gym, five themed restaurants, as well as childcare (an additional charge).

Top-notch service is one of the cornerstones at Skyfall Penthouse. Your dedicated chalet team are on hand to ensure everything is exactly how you want it, from sourcing the perfect nanny to serving you the perfect cocktail. All you'll need to decide is whether you want that drink shaken or stirred.



# Skyfall Penthouse

## Rooms

Skyfall Penthouse sleeps 11 guests in five bedrooms.

### Bedroom one

Master bedroom on top floor with en-suite bathroom and balcony.

### Bedroom two

Double bedroom on top floor with en-suite bathroom.

### Bedroom three

Fixed twin bedroom on top floor with en-suite bathroom.

### Bedroom four

Children's quad bunk room on top floor with en-suite shower room.

### Bedroom five

Single staff bedroom on first floor with en-suite shower room.

## Eating

Your chef and host are on hand throughout to ensure you are well fed and every glass is permanently charged.

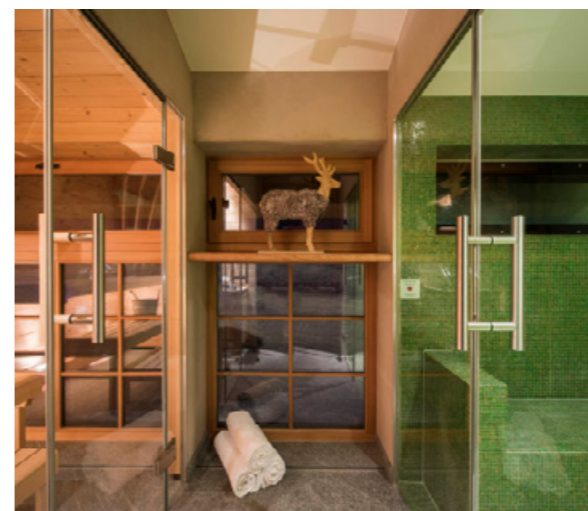
Each morning, you'll wake to the aroma of breakfast being prepared. On your return, afternoon tea is served to warm you through.

There's just enough time to unwind in the spa area before Champagne and canapés are served. You'll then gather in the dining room for a four-course feast accompanied by hand-selected wines. Beer, a complimentary drinks tray with three bottles of spirits and soft drinks are also available.

For little ones, your chef will be happy to prepare early children's tea at a time to suit them.

On one evening, you're free to explore the gastronomic delights of St. Christoph. As a guest of Skyfall Penthouse, you're welcome to dine at the Alberg Hospiz Hotel, a 5 minute stroll away, with five distinct and unique restaurants each with a different theme. Your host will be delighted to make recommendations and bookings.

Alternatively, Skyfall Penthouse can be taken on a self-catered basis if you prefer.





## Skyfall Penthouse

### Kids

With access to the nearby Alberg Hospiz Hotel's facilities, kids can splash in the swimming pool if they have any energy left from ski school. There is also childcare service at the hotel (at additional cost), although private nannies can also be arranged in the comfort of your chalet.

Kids are sure to love the separate TV room, where they can enjoy their favourite cartoons and movies. The chef will prepare early dinners that will appeal to tiny tastebuds, so the adults can enjoy a more leisurely dinner post-bedtime.

Come bedtime, younger guests can snuggle in the cosy quad bunk room. Cots and highchairs can be provided for little ones on request.

### Staff

Chef  
Chalet host  
Daily housekeeping  
Ski instructor (first 2 days)  
In-resort driver service  
In-resort concierge service

Additional staff such as nannies and massage therapists can be arranged on request.

### Location

Located in St. Christoph and set into the mountainside, Skyfall Penthouse's unique location offers ski-in access straight from the slope. The main St. Christoph lift station is a short stroll away, connecting you to the top of Valluga, the highest point of the Arlberg ski region, which is faster from St. Christoph than Arlberg resorts.

The in-resort driver service also extends to St. Anton which is approx. 10mins drive away.

The nearest airports are Innsbruck (1hr 15mins) or Zurich (2hrs 20mins).

### Facilities

Ski-in access  
Hamam & sauna  
Separate TV room  
Wood burning fireplace  
Balcony with mountain views  
Integrated sound system  
Ski and boot room  
Wifi  
Access to Alberg Hospiz Hotel's spa facilities with swimming pool and gym.

