



## Hotel Le Strato Courchevel 1850, France



### What we love...

We love the hotel's location, right by the Cospillot piste for ski-in/ski-out access.

Welcome to Le Strato, where five-star excellence meets high art and serious sport. Whatever you are searching for in your luxury ski holiday, look no further. Simply settle down in one of the fireside armchairs, order a glass of something vintage and full-bodied and plan your attack on one of Europe's best skiing spots.

The famous 'Strato' skis were designed back in 1965 by Laurent Boix-Vives, and his family took his passion for the sport and for design itself as the inspiration for this luxury ski hotel. With its ski-in/ski-out location and fabulous facilities, such as the top-of-the-range boot room (including bar, naturellement), skiing is a serious business here, but fitness in general is high on the agenda, with much of this spacious hotel given over to a huge spa, comprising a heated indoor swimming pool, fitness area, sauna and indoor Jacuzzi. When you make

your way home from the slopes each day, there's always a peaceful spot to find some pampering here.

Le Strato's elegant yet homely atmosphere makes it a joy to return to each evening. Spend a few quiet moments in the Library Gallery, taking in the fabulous artworks and then head to the wonderful restaurant Baumaniere 1850 for a Michelin-starred meal that is sure to make a strong impression on your luxury ski holiday. After dinner, relax in the cosy bar – there's nowhere more pleasant to watch the flames of an open fire leaping, with a glass of something warming in your hand, while the snow falls silently outside.

Le Strato was designed to be a retreat from the world, where only the finer things in life find their home and the attentive staff are always ready you to welcome you into what feels like a second home. And it certainly delivers on that promise.





# Hotel Le Strato

## Rooms

Hotel Le Strato has 2 rooms, 23 suites and 1 chalet.

Standard room (1) - 28 sqm. Double/twin beds; bathroom with separate shower, 2 TVs and balcony.

Superior room (1) - 37 sqm. Double/twin beds; bathroom with separate shower, 2 TVs and balcony.

Junior suites (2) - 42-43 sqm. Double/twin beds; bathroom with separate shower, 2 TVs and balcony.

Suite De Luxe (10) - 44-52 sqm. Double/twin beds; bathroom with separate shower, lounge area, 2/3 TVs and either a balcony or terrace.

Suites Duplex (2) - 59-62 sqm. Double/twin bedroom on the first floor with bathroom. On the entrance level below there is a lounge area with a shower room. The suites also have balconies and 3 TVs.

Executive Suites (2) - 55-58 sqm. Double/twin beds; bathroom with separate shower and an additional shower room. The suites also have balconies and 2/3 TVs.

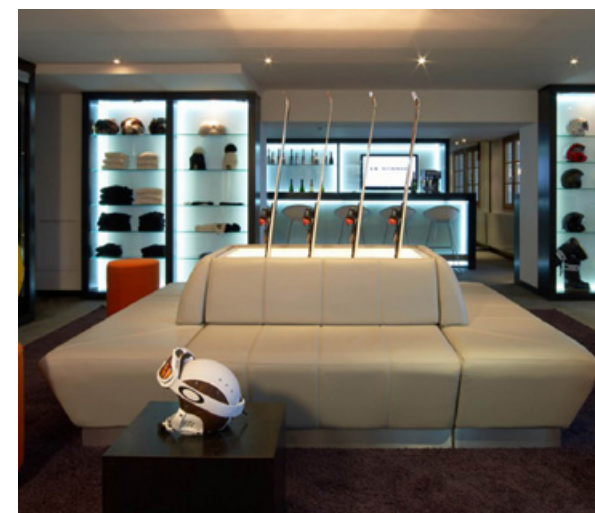
Family suites (2) - 50 sqm. One bedroom with double/twin beds; bathroom with separate shower, single bedroom with an alcove and shower room. The suites also have balconies and 2 TVs.

Suites Rez de Neige (2) - 69-70 sqm. Double bedrooms (one of the suites beds can be converted into a twin) bathroom with separate shower, lounge area and an additional shower room. The suites also have terraces and 3 TVs. These suites are interconnecting.

Duplex Superior (1) - 100 sqm. This suite has two floors, both of which have a double bedroom each with bathroom and separate shower as well as a lounge area. The suite also has a terrace and 6 TVs.

Duplex Luxe (1) - 101 sqm. Double bedroom on the first floor with bathroom. On the entrance level below there is a lounge area and bathroom with separate shower. The suite also has two balconies and 4 TVs.

Chalet Timeless (1) - 140 sqm. Spread over three floors, this luxury ski chalet sleeps four people. On the first floor there is a bedroom with queen-size/twin beds, bathroom with bathtub and shower, hammam, lounge area and terrace. On the third floor is the second bedroom with queen-size/twin beds, bathroom with bathtub and shower and balcony. The chalet also has a well-equipped kitchen, dining room, lounge with fireplace, TV/ DVD player and third balcony on the second floor.







# Hotel Le Strato

## Eating

Baumaniere 1850 – Michelin-starred restaurant that provides a memorable gourmet experience. The menu is inspired by the Mediterranean, with key dishes including turbot, truffle sea urchins, and giant crab. Don't miss the talented pastry chef's signature Mont Blanc dessert.

The Strato Bar – enjoy vintage and rare wines, amongst other tipples in this cosy, sophisticated spot.

The Ski Room Bar – pause for a coffee before you get your boots on, then warm up as you come back in from the slopes with a hot chocolate, or even toast the end of your day with a glass of Champagne.

## Facilities

- Ski-in/ski-out
  - Baumaniere 1850 restaurant
  - Le Strato bar
  - Ski Room bar
  - Spa (800m2)
  - Indoor swimming pool
  - Two saunas
  - Steam room
  - Indoor Jacuzzi
  - Treatment rooms
  - Gym
  - Children's outdoor play area
  - Ski room and shop
  - Library and gallery
  - Private indoor parking on request (additional cost)
  - 24h shuttle service
  - Room service
  - Wifi
- Hairdressers, ski instructors as well as yoga tuition and cookery classes can all be arranged upon request for an additional charge.







## Hotel Le Strato

### Kids

Children are warmly welcomed at this luxury ski hotel, they'll love the outdoor play area, on the hotel's sunny terrace overlooking the Cospillot piste, there is even an igloo!

Each Wednesday during the school holidays a dedicated children's high tea is laid on by chef, Jean-Andre Charial and his team in the Strato bar, including pancakes, waffles, pastries and biscuits. With entertainment provided, it's a highlight of the week for families.

Nannies and babysitters can be arranged on request.

### Location

This is the perfect base for a luxury ski holiday in Courchevel 1850, Le Strato is right at the heart of the resort in the middle of the exclusive Bellecote area. It has direct ski-in/ski access onto the Cospillot piste and is just a few minutes drive to the centre of Courchevel 1850. The hotel runs a complimentary ski shuttle service around the resort 24 hours a day.

The nearest airport is Chambéry, approximately 1 hour 30 minutes drive, whilst Grenoble and Lyon airports are approximately 2 hours 10 minutes and Geneva airport is 2 hours 20 minutes drive away. Moutiers rail station is also just 30 minutes' drive.

There is also an altiport in Courchevel 1850 for those travelling by helicopter or private jet.

