



## Ferme du Rys Chatel, France



### What we love...

We love the elegant interior design, carefully planned to compliment the natural beauty of this traditional farm creating a warm and welcoming atmosphere.

Recently renovated, Ferme du Rys is an 18th century farmhouse that has retained its history and natural beauty but is packed with luxuries and modern design. There are few properties in Chatel that can match this chalet for charm, character and alpine style.

Accommodating up to 8 adults and 5 children in five luxurious en-suite bedrooms, Ferme du Rys is the perfect mountain retreat for your friends and family. The spacious open plan living area is brimming with original features, most notably the original wooden beams, section of glass floor, log store, central board formed concrete plinth with 2-sided wood burner and stunning mountain views through the three huge sliding glass doors which take you onto a panoramic balcony.

On chilly afternoons after a morning spent on the slopes, there's plenty to entertain everyone at Ferme du Rys from soaking in the outdoor hot tub, the spa area with sauna to the cinema room with a 65 inch OLED TV, surround sound, streaming channels and PlayStation 4. If you still have some energy after a day on the slopes, the games room with a pool table and table tennis is the place to be for apres-ski entertainment.

To ensure you sleep long and soundly, each bedroom is designed with comfort in mind, with puffy duvets and luxury bath products, because it's as often the little things that make a big difference.

Here at Ferme du Rys, you might just have found your own little piece of heaven.



# Ferme du Rys

## Rooms

Ferme du Rys sleeps up to 8 adults + 5 children in five bedrooms.

### Bedroom 1

Double/twin bedroom on second floor with en-suite bathroom.

### Bedroom 2

Kids' dorm room on second floor with 2 x bunks and further single bed (sleeps 5 children) with en-suite shower room.

### Bedroom 3

Double/twin bedroom on second floor with en-suite bathroom.

### Bedroom 4

Double/twin bedroom on first floor with en-suite shower room.

### Bedroom 5

Double/twin bedroom on ground floor with en-suite shower room.

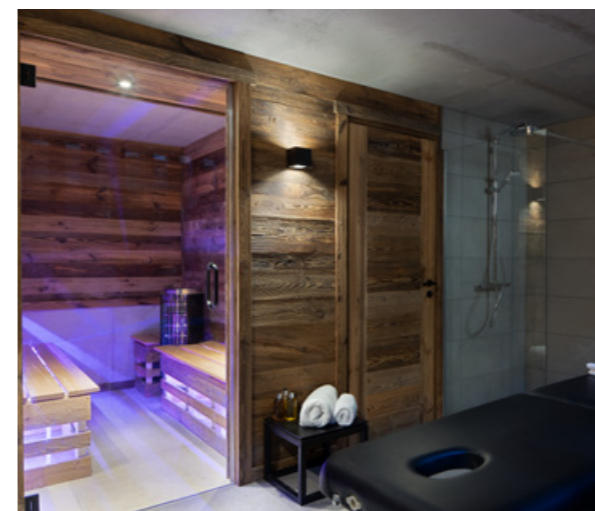
## Eating

Ferme du Rys is a luxury self-catered chalet in Chatel, which is still an active farming town and, as such, is brimming with markets and shops selling local cheeses, charcuterie and more.

The modern open-plan kitchen is very well appointed, with all the equipment you could need to cook for yourself and your party. With a sociable island, you can perch on the breakfast bar with a drink and chat to whoever is 'chef' that night.

A pre-arrival fridge-stocking service can be arranged and charged for separately, meaning you won't have to shop when you arrive. You will, of course, be welcomed with champagne on your arrival.

If you wish to dine out, your in-resort concierge will be more than happy to make recommendations and dinner reservations.





# Ferme du Rys

## Kids

Ferme du Rys is a fantastic chalet for families with children and are made most welcome here.

After a busy day on the slopes, they can kick back and chill out in front of a movie in the cinema room with surround sound and PlayStation 4. There is also a games room with a pool table and table tennis to bring out their competitive streak.

Come bed time, they'll love the dorm room with two bunk beds and a further single bed to sleep five children. Additionally, the double bedrooms can be configured as twin rooms, giving you maximum flexibility no matter how many children you have in your party.

Cot and highchairs can be provided and childcare can be arranged on request.

## Staff

Firefly pre-arrival concierge service

Chalet staff include:  
Chalet manager  
Housekeeper

Additional staff such as nannies and massage therapists can be arranged on request.

## Location

Ferme du Rys is located above the traditional alpine village of La Chapelle d'Abondance, approximately 10 minutes drive to Chatel.

The nearest ski lift, the Panthiaz telecabine, is located a few hundred metres on the main road below the chalet. Otherwise, it is an easy to drive to other ski lifts in Chatel and Pre La Joux.

The nearest airport is Geneva which is approx. 1hr 40mins away.

## Facilities

- Outdoor hot tub
- Sauna
- Cinema room with surround sound
- Wood burning fireplace
- Balconies
- TV snug
- Games room
- Playstation 4
- Table tennis & pool table
- Ski and boot room

