



Chalet Celeste Courchevel 1300



What we love...

We love the chalet's spacious and contemporary loft-like feel – its fresh and unfussy design leaves the quality to shine.

At this new luxury chalet, you'll discover all the best things about contemporary ski chalet living. Chalet Celeste has a high-spec design and a fantastic location in Courchevel 1300 – an authentic alpine village that's possibly the most picturesque of all the Courchevels.

Throughout Chalet Celeste, the carefully crafted furnishings ooze quality and the attention to detail is clear, from the deep soaking tubs and atmospheric pendant lighting down to the soft fluffy towels.

The allure of this luxury chalet lies not just in its sophisticated design, but in the seamless harmony

between opulence and nature's breathtaking canvas. The spacious open-plan living area is light and airy – the mixed use of natural materials creates a cool space, while exposed beams add a hint of cosiness and floor-to-ceiling windows give glorious views out to the mountains.

After a day's skiing in the vast Three Valleys, head to the cosy TV snug to watch a movie or settle down by the log burner with your favourite tippie and unwind over great conversation before bed. Each of the three en-suite bedrooms is a sumptuous haven – bag the four-poster room for a touch of romance.



Chalet Celeste

Rooms

Chalet Celeste sleeps up to 6 guests in three bedrooms.

Bedroom 1

Master bedroom with king-sized bed on the lower level with ensuite bathroom.

Bedroom 2

Double bedroom with queen-sized bed on the lower level with ensuite bathroom.

Bedroom 3

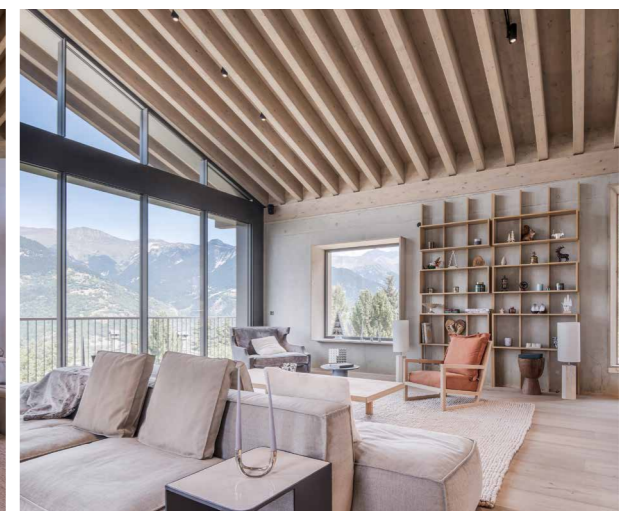
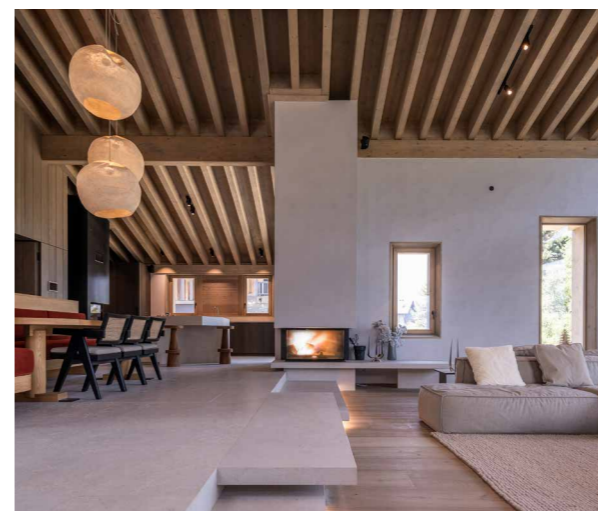
Double bedroom with queen-sized bed on the lower level with ensuite shower room.

Eating

Enjoy a scrumptious continental breakfast, which will set you up nicely for fun days in the snow, seated around the spacious yet cozy dining table. Five nights out of seven, you'll be able to sit back and relax while delicious food will be prepared and then delivered and finished off in your chalet by your chef.

On chef's nights off this luxury chalet has a great location for sampling Courchevel 1300's pizzerias, bistros and bars. Alternatively, the chalet has a modern and fully equipped kitchen, so cooking for yourselves couldn't be easier. A carefully placed picture window by the contemporary island gives you those gorgeous alpine views, and there's a sociable dining area for home cooked feasts.

For a special occasion, ask the concierge to pre-book a table at the delightfully understated Azimut restaurant, which serves traditional fare and boasts a Michelin star.





Chalet Celeste

Kids

Kids will love the sheltered lower slopes as well as the blue and green slopes at Courchevel 1850, just 10 minutes away by lift. Watching the ski jumpers at the Olympic ski jump – built for the 1992 Olympics – is also great fun!

The village itself is family-friendly, with a laid-back traditional charm and plenty of relaxed restaurants.

Chalet Celeste's TV snug is a great separate space for older children to hang out and childcare can be arranged through the concierge.

Location

Chalet Celeste sits in the pretty ski village of Courchevel 1300. There's a fast lift up to Courchevel 1850 just outside the village, giving you easy access to the high-altitude skiing of the vast Three Valleys area with its over 600km of pistes with all types of terrain.

Transfers from Geneva or Chambéry airport take around 2 hours.

Staff

Firefly pre-arrival concierge service

Chalet staff include:
Housekeeper
In-resort concierge service

Additional staff such as a driver, nannies, massage therapists can be arranged on request.

Facilities

Wood-burning fireplace
Wifi
Ski and boot room
Sun terrace
1 car parking space
Separate TV lounge

