



## Etoile du Nord – West Wing Val d’Isere



### What we love...

We love the scale of the wow-factor lounge, where soaring floor-to-ceiling windows immerse you in snowy mountain scenes.

Welcome to one of the most impressive luxury ski chalets in Val d’Isere. Newly built for the 2023 winter season, Etoile du Nord – West Wing is a pristine mountain retreat where every detail has been considered and exceptionally delivered.

Adjoining sister chalet, Etoile du Nord – East Wing, this architectural gem harmoniously blends contemporary design and cosy alpine charm against a jaw-dropping snowy mountain backdrop. The impressive double-height open-plan entertaining space of this catered chalet is flooded with light and perfectly frames the views through colossal floor-to-ceiling windows. Take your coffee out on the terrace and breathe in the fresh mountain air, perch at the kitchen’s glossy island and sip your favourite cocktail as your private chef cooks up a feast, or sink into one of the plush sofas by the roaring modern fire surrounded by friends and family.

If you can tear yourself away from mountain-gazing, treat yourself to the ultimate relaxation in the chalet’s luxurious wellness zone, where natural materials add to the serenity. Soak in the heated swimming pool – which features a shallow Jacuzzi area ideal for lounging – and soothe weary limbs in the sauna and Hammam. Ramp up the vibe with games of pool or ping pong, or settle down for movie marathons in the cinema and games room, where an innovative viewing window gives an underwater view into the pool.

After fun and indulgent days, lay your head in one of the six sumptuous bedrooms, each with its own marble bathroom. With the master bedroom suite taking the entire top floor, you can indulge with your own private balcony complete with hot tub. The perfect balance of soft and sleek, these striking spaces guarantee a restful night ahead of another unforgettable day.





## Etoile du Nord – West Wing

### Rooms

Etoile du Nord (West Wing) sleeps up to 10 + 4 guests in six bedrooms.

#### Bedroom 1

Master bedroom on top floor with ensuite bathroom, study, private balcony and hot tub

#### Bedroom 2

Double bedroom on ground floor with ensuite shower room

#### Bedroom 3

Double bedroom on ground floor with ensuite shower room

#### Bedroom 4

Double/twin on ground floor bedroom with ensuite bathroom

#### Bedroom 5

Double bedroom on lower ground floor with ensuite bathroom and dressing area

#### Bedroom 6

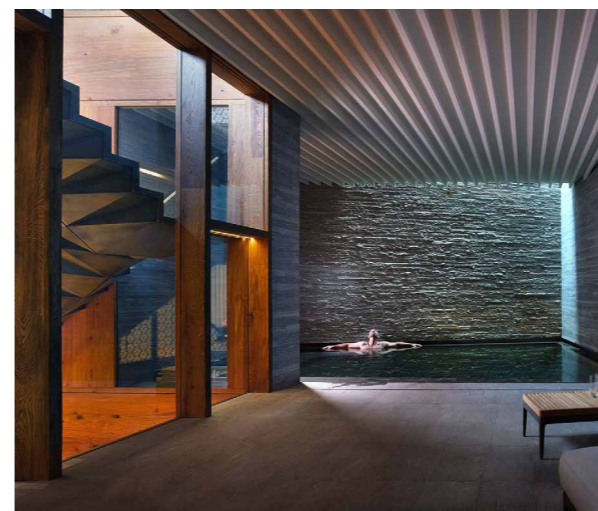
Quad bunk room on lower ground floor with separate bathroom

### Eating

Top-quality food and drink is a big part of the Etoile du Nord – West Wing experience. This luxury ski chalet is fully catered, allowing you to relax and indulge. Your days begin with a mouth-watering breakfast and coffee to perk you up for a morning on the slopes.

Afternoon tea, served by the fireplace in the chalet's stunning lounge, awaits your return, with plenty of tasty morsels for everyone to tuck into. Dinner is a fully flexible affair and can be customised to your preferences, so let the chef know your likes and dislikes ahead of your stay and you'll be in for a real treat.

So that your experience can be tailored to your requirements, please note that food and drinks are charged for separately. Breakfast and afternoon tea are provided seven days per week, with dinner offered six days per week, leaving you one night free to check out Val d'Isere's excellent food scene.







## Etoile du Nord – West Wing

### Kids

Etoile du Nord – West Wing is a brilliant option for families, with its spacious bunk room, cinema and games room (which can become part of the bedroom for a fun sleepover space) and swimming pool. Kids are sure to love the swimming pool's shallow Jacuzzi area and the originality of the underwater viewing window.

With your chalet's in-resort chauffeur service, little ones can be whisked from the slopes to the movie room in minutes. Childcare can be arranged through your in-resort concierge if required.

### Location

Chalet Etoile du Nord – West Wing sits attached to its sister East Wing chalet in Val d'Isere's Petite Alaska enclave. It takes just 10 minutes to walk (or two minutes to drive) to the slopes and you're also a short walk from the resort's top-notch restaurants and attractions.

The chalet's dedicated in-resort chauffeur service (8am-1am daily) means it couldn't be easier to get around Val d'Isere.

Chambery is the closest airport, approx. 2hrs 30mins away, while Geneva, Lyon and Grenoble are all approximately 3hrs 30mins away.

### Staff

Firefly pre-arrival concierge service

Chalet staff include:

- Chalet manager
- Chef
- Chalet host(s)
- Daily housekeeping
- In-resort driver service
- In-resort concierge service

Additional staff such as nannies and massage therapists can be arranged on request.

### Facilities

- Indoor swimming pool
- Sauna
- Hammam
- Wood-burning fireplace
- Home cinema room
- Wifi
- Relaxation area
- Lift
- Games room with pool table
- Massage room
- Integrated sound system
- Bar area
- Balconies and terrace
- Private ski locker with boot warmers
- Smart TV
- 2 indoor parking spaces in shared garage
- Outdoor hot tub (master bedroom)

