



## Sapphire Estate Morzine



### What we love...

We love the glorious wellness area at the Sapphire Estate including indoor pool with massage and counter-current jets, and a view of the mountains; a Hammam; ice chamber and a sunken outdoor hot tub and barrel sauna.

Nestled on the outskirts of Morzine sits this truly magical property, just made for large gatherings with friends and family or a corporate event.

Sapphire Estate has access to the very best of the Portes du Soleil area so if you expect a fabulous location and awesome skiing, and you'll get it in spades. But there's so much more than skiing to a holiday here.

Rest and relaxation are the cornerstones of life at Sapphire Estate. The property has one of the best wellness areas we've seen, comprising an indoor pool with massage and counter-current jets, where you can swim with a view of the mountains; a Hammam; ice chamber and a sunken outdoor hot tub and barrel sauna. There's also a gym and forest trails for those who want to keep fit, and a Bamford spa for guests who like a little relaxation in their fitness regime .

The bar and lounge, with pool table, are ideal for a gathering of friends for a special occasion – or just to celebrate the end of another fabulous day in Morzine. Have a game of pool while the bar staff prepare you drinks from the house Four Bottles bar menu or wander out with your drinks onto the

terrace with sunken fire pit. There's also a cinema room where you can host your own movie nights, or keep the kids entertained while the adults enjoy pre-dinner cocktails. The main living room is open plan and has a feature fireplace, balcony and panoramic views across the resort, making it a lovely spot to unwind with a drink after a long day.

A closed kitchen for your chef to work in gives the sophisticated dining room, with its wonderful views. Whatever your tastes and requirements, the menus are designed to rival your favourite restaurants and everyone goes home from Chalet Sapphire well fed.

When you turn in at the end of each day, you'll find your bedroom always a delight to return to. Each one has a super-king or twin beds for you to sink into, as well as extra surprises such as freestanding baths, rainfall showers and capacious dressing rooms. It's a good thing there's so much to get up for in the mornings frankly, or you might never leave. We've found that the Breakfast Club is incentive enough to drag us from under our luxury duvets here.

For smaller groups of up to 12 guests, Chalet Sapphire comprising of 6 bedrooms, can be rented on its own.





# Sapphire Estate

## Rooms

Sapphire Estate sleeps 16 guests in eight bedrooms (six bedrooms in the main Chalet Sapphire and two bedrooms in Little Gem).

### Chalet Sapphire:

#### Bedroom one:

Double room on Level -4 with super-king/twin beds, en-suite shower room and terrace access.

#### Bedroom two:

Master suite on Level -1 with super-king/twin beds, freestanding bath in bedroom, en-suite shower room, dressing area and balcony with Mont Chery views.

#### Bedroom three:

Double room on Level -1 with super-king/twin beds and en-suite bathroom.

#### Bedroom four:

Double room on Level -1 with super-king/twin beds and en-suite shower room.

#### Bedroom five:

Master suite on top floor with super-king/twin beds, freestanding bath in bedroom, en-suite shower room and Juliet balcony with views towards Avoriaz.

#### Bedroom six:

Master suite on top floor with super-king/twin beds, en-suite bathroom with separate shower, separate dressing room and sitting area with panoramic views.

### Little Gem (detached chalet with private living area):

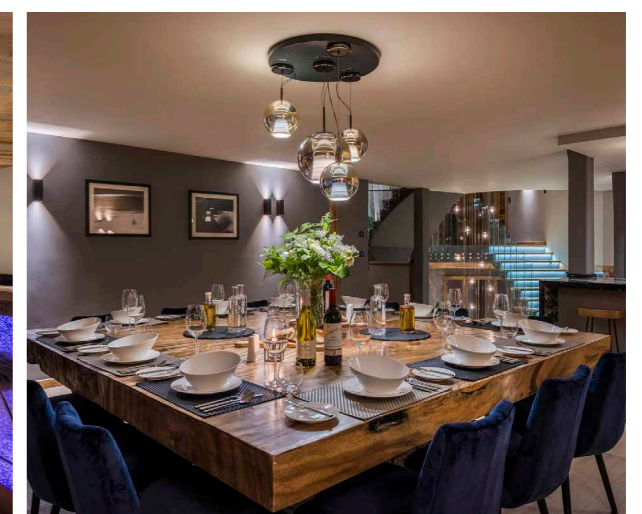
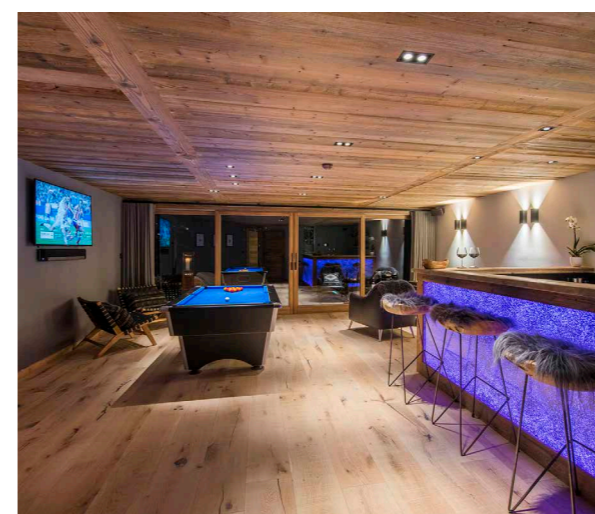
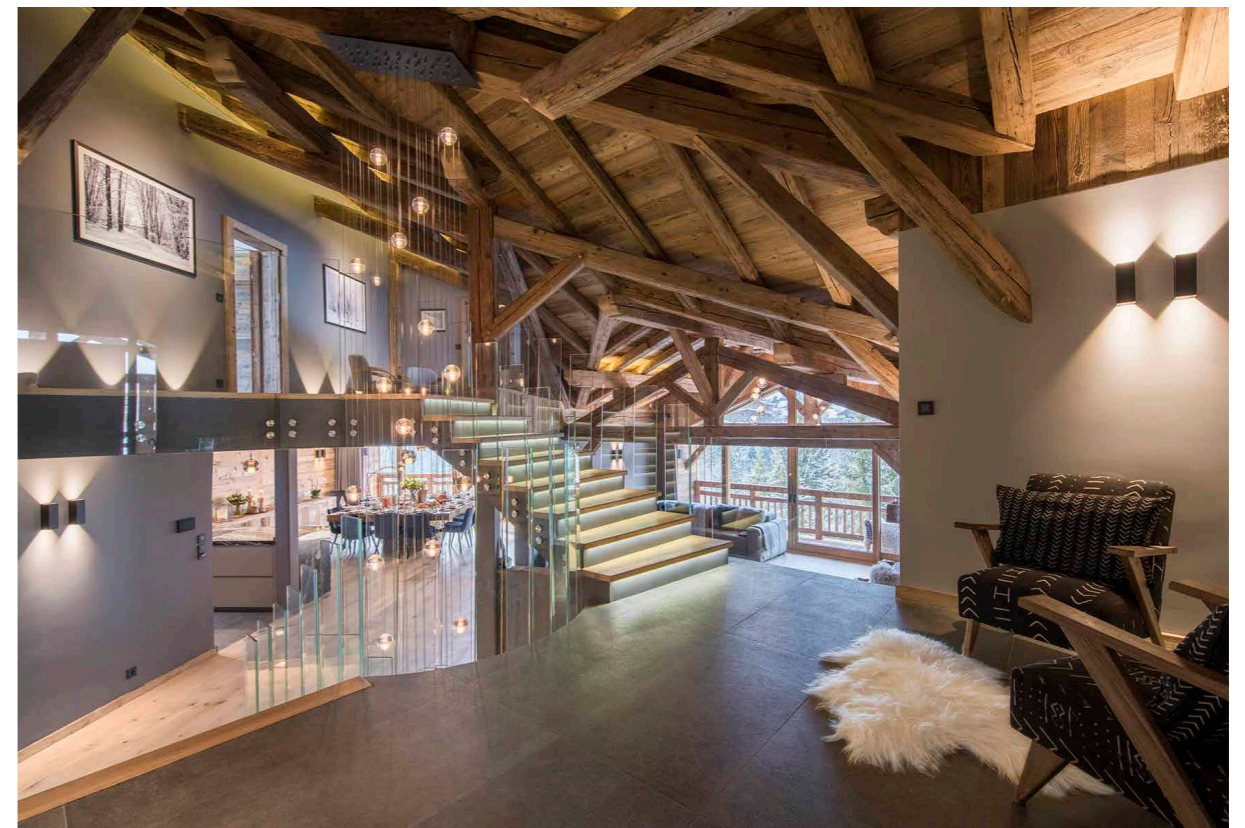
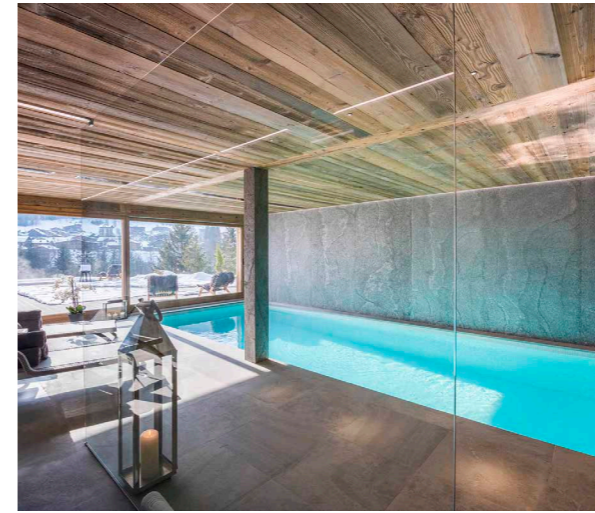
#### Bedroom 7:

Double room with king/twin beds and en-suite bathroom.

#### Bedroom 8:

Double room with king/twin beds and en-suite shower room.

For smaller groups of up to 12 guests, Chalet Sapphire, comprising of 6 bedrooms, can be rented on its own.







## Sapphire Estate

### Eating

At Sapphire Estate, eating is as much a part of the experience as skiing. It's a business the staff take seriously, with the belief that each meal here should be as outstanding as a meal at your very favourite restaurant.

The talented staff are handpicked from the best restaurants and Michelin-starred kitchens and they will help create menus tailored specifically to your party – using local, seasonal ingredients wherever possible. Whether you want to be wowed with the best in modern fine dining or simply enjoy some of the best comfort food you'll ever eat, curled up on the sofa, you have only to say.

Guests can enjoy a Champagne reception at the time of your choosing. It's a lovely way to kick off a special celebration evening, such as a birthday.

This luxury chalet is renowned for its 'Breakfast Club', with a selection of hot options to choose from. A reduced menu is offered on the chef's days off and a continental spread will be laid out for you.

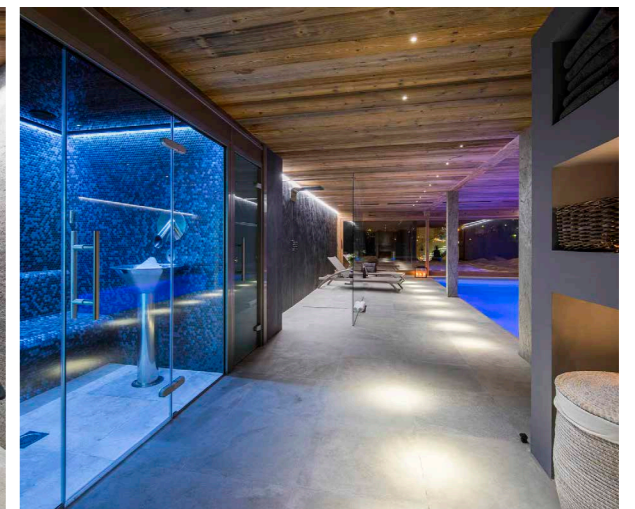
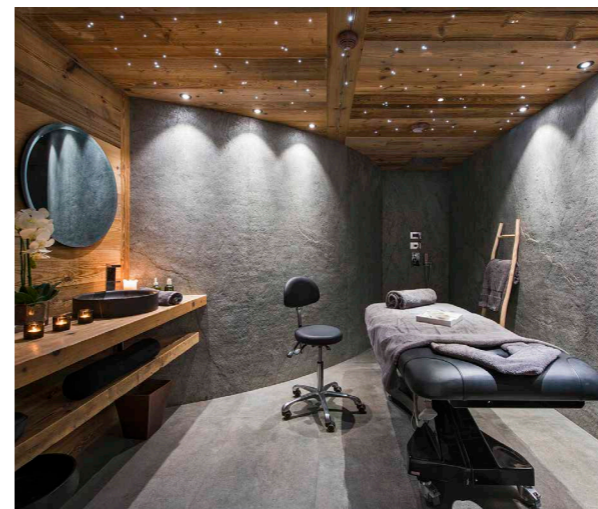
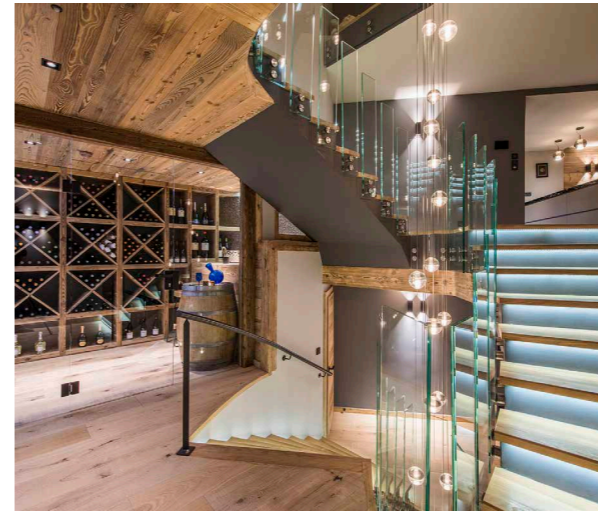
When you return from your day's skiing, afternoon tea will be laid out ready for you, including freshly made breads, cakes and a

charcuterie platter to take the edge off your hunger. Boot room snacks and drinks are also available.

In the evenings, dinner can be whatever you want it to be. The staff recommend two gourmet dinners, one 'relaxed dinner' which might be combined with a cinema night or simply served to you in front of the fire, a 'chef's table' meal (six-course tasting menu with matched wines) and a night of Kaiseki (a six-course Japanese fine-dining experience).

And you can rest assured the wine list is as carefully considered as the menus. The chalet's owners make it their business to regularly visit producers across Europe (it's a tough job but someone has to do it) in order to ensure the wine list is always exceptional. There are eight to ten house wines available, but the chalet's cellar is also stocked with an a la carte list for you to choose from. Prosecco and house champagne are also served on tap throughout your stay and the bar is stocked with craft beers and gin – there's even a house cocktail list.

Luxury dining at Sapphire Estate is offered on five evenings. Your chalet host will be happy to recommend and book a restaurant or help arrange a delivery of freshly made pre-prepared meals to the chalet on chef's nights off.







# Sapphire Estate

## Kids

Ideal for those travelling with children, Sapphire Estate is a family-friendly ski chalet, where parents can really relax, knowing everything's taken care of.

Aside from the pool, the chalet comes equipped with a cinema room with games consoles that will keep them entertained for hours.

Your chef will be able to put together dedicated kids' teas, designed for younger palates, and served earlier so that children can eat in a more laid-back setting.

Childcare and ski lessons can be arranged on request.

## Location

Sapphire Estate is set in private, gated grounds just moments from the centre of Morzine. It's a 10mins walk to the bars, restaurants and shops in the village centre, yet once you're tucked behind the cosy four walls of your chalet you feel like you could be in the middle of nowhere.

With an in-resort driver service at your disposal, you can be whisked away to the local ski lifts. For high-altitude skiers, the best access is at Prodains Telepherique, a 5mins drive away, from where you can reach the Avoriaz area.

The nearest airport is Geneva, approx. 1hr 20mins drive.

## Staff

Firefly pre-arrival concierge service

Chalet staff include:

Chalet manager

Chalet host

Chef

Housekeeper

In-resort driver service

In-resort concierge service

Additional staff such as nannies and massage therapists can be arranged on request.

## Facilities

Indoor swimming pool

Outdoor hot tub

Massage treatment room

Hamam

Gym

Wood-burning fireplace

Home cinema room

Wine cellar

Wifi

South-facing terrace

Sonos sound system

Balconies

Ski and boot room

Outdoor barrel sauna

Private parking

Sunken outdoor fire pit

Bar and lounge with pool table

