



## Casa Mat St Tropez



### What we love...

We love the large peaceful gardens, where a swimming pool sits amid immaculate lawns screened by mature trees and dotted with fragrant lavender.

Casa Mat is a gloriously refined place designed for quality time with family and friends. There's style and space in spades at this serene luxury villa, which sits close to the stunning long stretch of sand at Pampelonne Beach and is just a five-minute drive from swanky St Tropez.

You'll be warmly greeted on arrival and shown around the many delights of this effortlessly chic home-from-home. Highlights include a bright and elegant living area and a huge outdoor space made for spending sun-soaked days by the outdoor swimming pool, rustling up family feasts on the barbecue and napping in the shade of the covered wraparound terrace.

The dreamy gardens here are private and pristine – take time to lose yourself in thought as you

wander among the mature trees and smell the French lavender. Pop open a few bottles at the bar in the stone-and-glass pool house to accompany leisurely al fresco lunches around the farmhouse table, then curl up on the rattan sofa with a good book or up the ante with playful games of petanque or table tennis.

When it comes to soothing sleeping spaces, the range of crisp bedrooms will suit all guests, with doubles, family rooms with an additional single room or bunk room, and a generous first-floor master featuring a dressing room, marble bathroom and small terrace where you can gaze out over the gardens and the swimming pool as you sip your morning coffee.



# Casa Mat

## Rooms

Casa Mat sleeps 10 + 4 guests across seven bedrooms.

### Bedroom 1

Double bedroom on the ground floor with en-suite bathroom and garden access

### Bedrooms 2

Double bedroom on the ground floor with en-suite shower room and garden access\*

### Bedroom 3

Single room on the ground floor accessed via bedroom 2 with en-suite shower room and garden access\*

### Bedroom 4 – Guest House

Double bedroom on the ground floor with en-suite shower room and garden access

### Bedroom 5

Master bedroom on the first floor with en-suite bathroom & private terrace

### Bedroom 6

Double bedroom on the first floor with separate shared bathroom

### Bedroom 7

Bunk room on the first floor with bunk bed sleeping 2, 1 single bed and separate shared bathroom

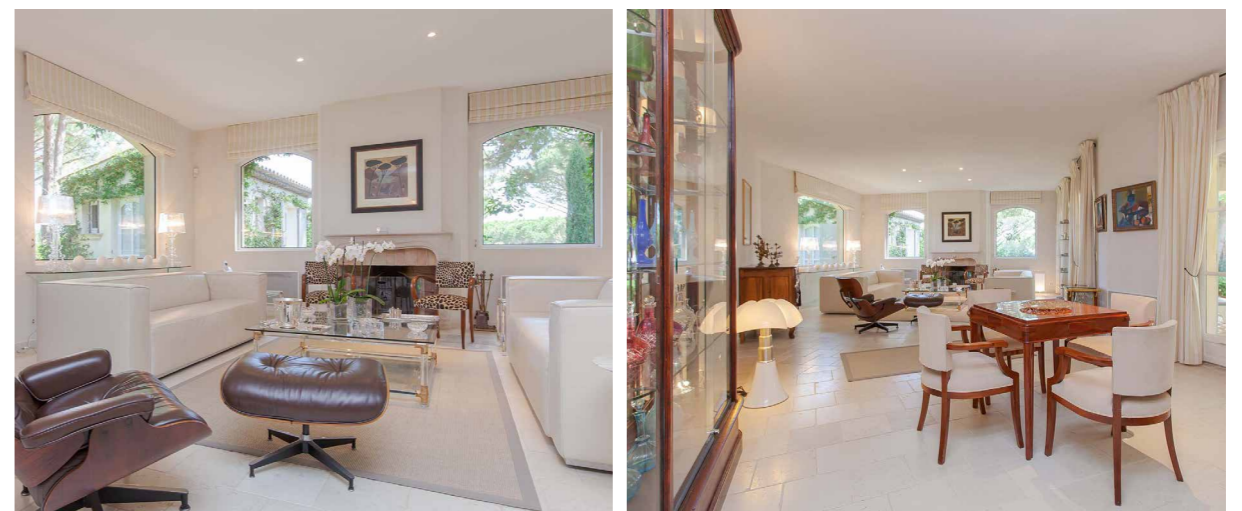
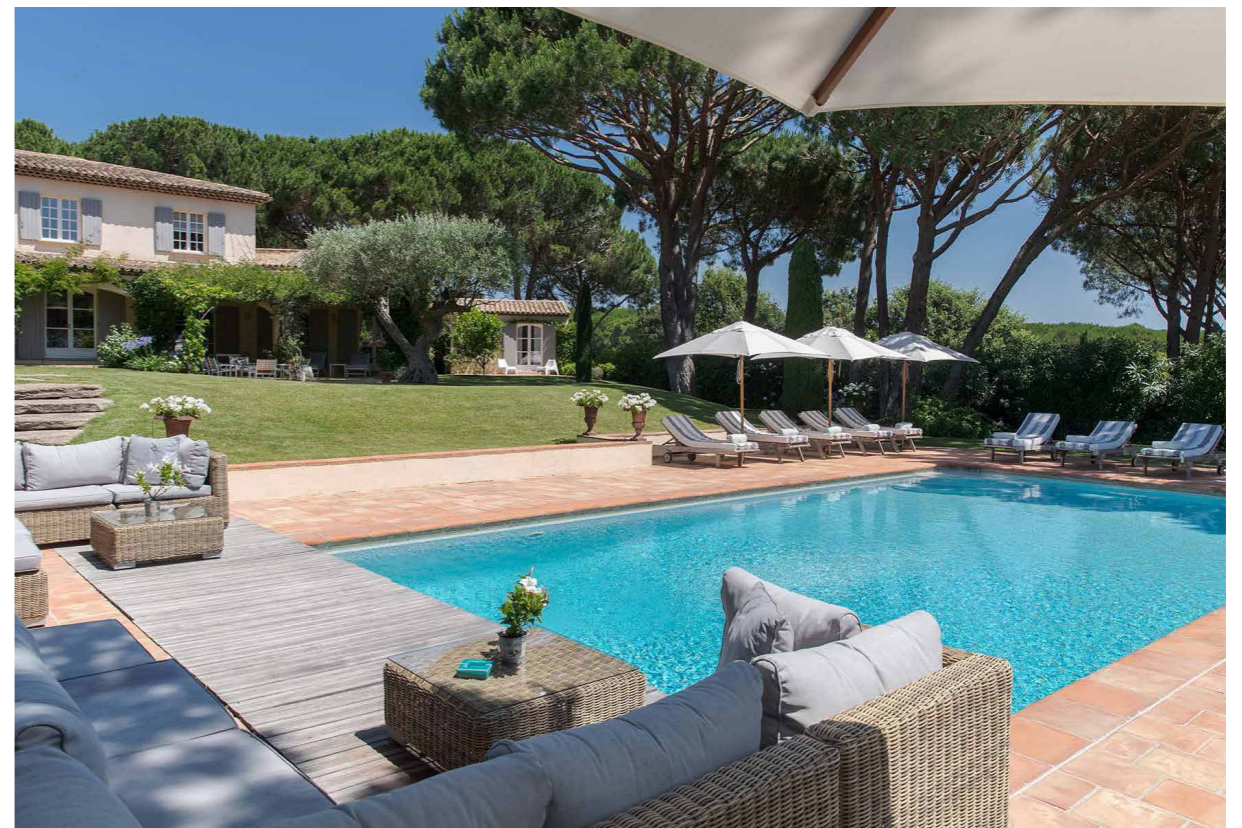
## Eating

Al fresco dining is made easy at Casa Mat. The barbecue area is the ideal space for whipping up fresh local feasts, complete with a large farmhouse table that can cater for all the family. A second dining area is housed under an arbour in front of the house, and the pool house bar is an excellent space for grown-up evenings without leaving the comforts of the villa.

Inside, if you prefer to have all the facilities at your fingertips, there's a spacious kitchen with a stove, fridge and dishwasher, plus a handy utility.

To have all meals taken care of, or to celebrate a special occasion, a private chef can be arranged on request.

You're just a 10-minute walk from Pampelonne Beaches for beach clubs and bars, and a five-minute drive from St Tropez's excellent choice of eateries.





## Casa Mat

### Kids

Casa Mat is very family friendly. Children are likely to spend much of their time outdoors thanks to the outdoor swimming pool, table tennis and petanque ground. The mature trees and covered terraces provide plenty of shaded spots.

Indoors, there's a separate TV lounge upstairs for movie nights, and two of the bedrooms (a double and a single) have a separate shared entrance, perfect for families with a child.

The villa has an electric entrance gate for extra safety and security.

A concierge team is available seven days a week to take care of any extras you may need, such as arranging childcare on request.

### Staff

Villa staff include:  
Housekeeper

Additional staff such as a private chef, nannies and driver service can be arranged on request.

### Location

Casa Mat sits near the idyllic medieval village of Ramatuelle. It's just a 10-minute walk from Moorea beach and the gorgeous Pampelonne Beach with its long swathe of sand and upmarket beach clubs, and a five-minute drive from the centre of St Tropez for boutiques, restaurants and bars.

The closest airport is Nice, approximately 1 hour 30 minutes away.

### Facilities

- Outdoor swimming pool
- Fireplace
- Wifi
- Pool house
- Table tennis
- Private garden
- BBQ
- Covered terrace
- Air-conditioned bedrooms
- Separate TV lounge
- Al fresco living and dining areas
- 10 minute walk to Pampelonne beaches
- Petanque ground

