



## Chalet Berlioz Meribel



### What we love...

We love the wonderful living space, with bar, billiards table and fabulous views from every seat.

This brand-new snowy bolthole is the perfect place to enjoy a luxury ski holiday in Meribel. Chalet Berlioz is tucked away in a private enclave, shielded by young trees, but is also incredibly close to the action, just moments from both the lifts and the town by chauffeured drive.

Inside, the chalet is the ideal combination of style and comfort, with rustic woods and stone bringing a laid-back feel and everything designed to make you feel at home. The main living space is open-plan and has a light and airy feel with floor-to-ceiling windows and magnificent views of the mountain. Lounge on the enormous sofas where the sun streams through and catch up with friends or just enjoy watching the scenery change on the mountain. A huge fireplace in the middle of the room creates a focal point that guests are naturally drawn to, and a lovely spot to gather for drinks and canapés. Or you can take a seat at the beautiful bar in the corner and have a cocktail shaken for you. Close by is a dining space to comfortably seat 12 and a wooden billiards table, for a game after dinner.

If you need to find some alone time, upstairs in the 'gallery' there's a library and office space as well as a cinema room with comfy seating and Sky TV for afternoon slouching. Or spend a few hours in the wellness area working up an appetite in the gym or enjoying a massage to soothe any aches and pains after your ski.

Each of the bedrooms has its own spa-style en-suite and is designed to be ultra comfy, for the best night's sleep you'll ever have. All the rooms can be configured as either twins or doubles, giving you and your party plenty of flexibility, and several of the rooms have direct access to the chalet's impressive terraces.

These outdoor spaces really add another dimension to life at Chalet Berlioz. Enjoy a dip in the Jacuzzi or barrel sauna, sit in the sun in the outdoor lounge areas with a book or simply take your breakfast out to the al fresco dining space and take in the mountain air. There's no better way to start your day.





# Chalet Berlioz

## Rooms

Chalet Berlioz sleeps 10 + 2 guests across six bedrooms.

### Bedroom 1

Master double/twin bedroom on the ground floor with en-suite bathroom and direct access to outside terrace, hot tub and sauna

### Bedroom 2 and 4

Double/twin bedrooms on the ground floor with en-suite shower rooms and direct access to outside terrace, hot tub and sauna

### Bedroom 3

Double/twin bedroom with en-suite bathroom on the ground floor and direct access to outside terrace, hot tub and sauna

### Bedroom 5

Small double/twin bedroom on the first floor with en-suite shower room. Please note this room has an interconnecting door with room 6

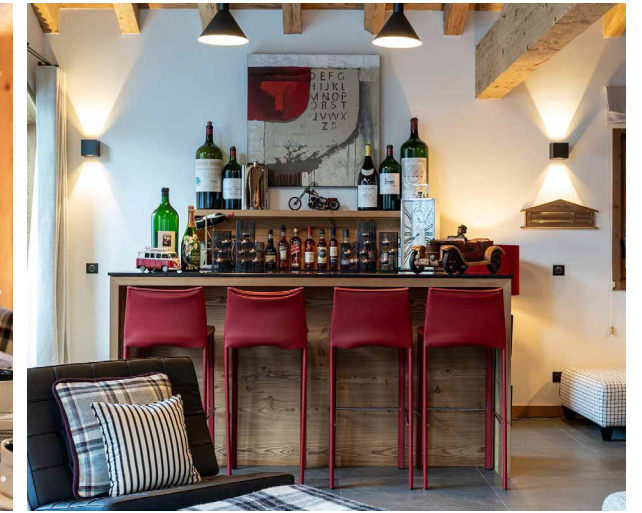
### Bedroom 6

Double/twin bedroom on the first floor with en-suite shower room. Please note this room has an interconnecting door with room 5

## Eating

A private chef will look after you all week, ensuring everything at Chalet Berlioz is to your liking. You'll wake each morning to the aroma of a cooked breakfast being prepared. There are also continental breakfast options if you prefer something a little lighter to start your day. Either way, you'll be well set up for an energetic day on the slopes. When you return, afternoon tea will be laid out waiting for you with sweet treats and hot drinks to warm everyone through. Then there's just enough time to enjoy all the chalet has to offer before getting ready for pre-dinner canapes, followed by a gourmet four-course meal. Complimentary house wines and champagne, stored in the wine cooler nearer the bar, are always free-flowing.

On your chef's two nights off, Berlioz's staff will be happy to help you make restaurant bookings at the best tables in town.







## Chalet Berlioz

### Kids

Chalet Berlioz is a family-friendly ski chalet that makes a perfect base for exploring Meribel with kids. The area has lots of great ski schools and childcare options.

The chalet itself is open plan, meaning the kids can always be playing nearby without feeling 'watched'. Children will enjoy the TV room up in the gallery with low-level seating to sprawl on in front of a film or Sky TV, and older ones might like to play billiards in the main living area.

All the bedrooms can be configured as twins, giving you lots of flexibility, and two of the en-suite bedrooms are interconnected, making them ideal for a family bringing young children or a nanny.

### Staff

Firefly pre-arrival concierge service

Chalet staff include:

Chalet manager

Chef

Daily housekeeping

Ski guide/instructor (6 days)

In-resort driver service

In-resort concierge service

Additional staff such as nannies and massage therapists can be arranged on request.

### Location

This luxury chalet in Meribel is located on the exclusive Lotissement Brames just off the Route du Mottaret. The property is just a couple of minutes' chauffeured drive from the main lift hub and the centre of Meribel itself, with all its boutique shops, bars and restaurants. The chalet has a dedicated driver service from 8am to 11pm which can bring you all the way back to your heated driveway, covered porch and the comfort of your ski room after a day on the mountain.

The nearest airports are Geneva and Grenoble (each 2 hours 30 mins away), Lyon (2 hours 15 mins) and Chambéry (1 hour 40 mins). You can also take a train to Moutiers, which is just 40 minutes from Chalet Berlioz.

### Facilities

Outdoor hot tub

Wood-burning fireplace

Sky TV

Private parking

Barrel sauna

Heated ski and boot room

Gym and massage room

Separate TV and work space area on the mezzanine

Outdoor terrace & garden

