



The Penthouse Courchevel 1850



What we love...

We love the the central location of The Penthouse in Courchevel 1850 - skiing, bars, restaurants and stylish boutiques on your doorstep.

Centrally located in-between La Croisette and Le Forum, the elegant Les Suites de la Potiniere Hotel and Spa is in an ideal position for easy access to the main lifts. This in-turn gives you direct access to the 3 Valleys, making this luxury penthouse, the perfect starting point for a ski day on the world's largest ski area. You will also enjoy Courchevel 1850's array of bars, restaurants and stylish boutiques all being on your doorstep.

The recent modernisation and renovation of Les Suites de la Potiniere Hotel and Spa saw the hotel upgrade to a deserving five star rating. The hotel's new interior boasts an elegant contemporary style. Stay in the sublime penthouse suite for private access to the fourth floor which gives superb views of

the cosmopolitan resort centre. The hotel consists of 15 suites and The Penthouse apartment.

All guests at the hotel have free access to the delightful indoor swimming pool and state-of-the-art fitness area. Be first in the queue by hiring equipment from the in-house, private ski rental shop where you can also book an instructor or your ski pass. Back in The Penthouse, enjoy the large open-plan living areas, separate TV room and in the evenings retreat to the super comfy en-suite bedrooms.

The stunning in-house bar and lounge is a smart and sophisticated place for après-ski, and certainly a place to be seen and to unwind after an energetic day on the slopes.



The Penthouse

Rooms

The Penthouse sleeps 10 guests across five bedrooms.

Bedroom 1

Master/twin double bedroom with en-suite bathroom and private balcony

Bedroom 2

Master/twin double bedroom with en-suite shower room and share balcony access

Bedroom 3

Double/twin bedroom with en-suite bathroom

Bedroom 4

Double/twin bedroom with en-suite shower room

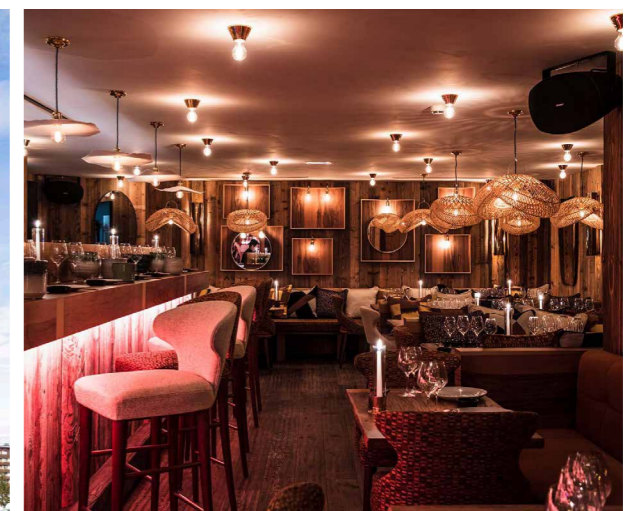
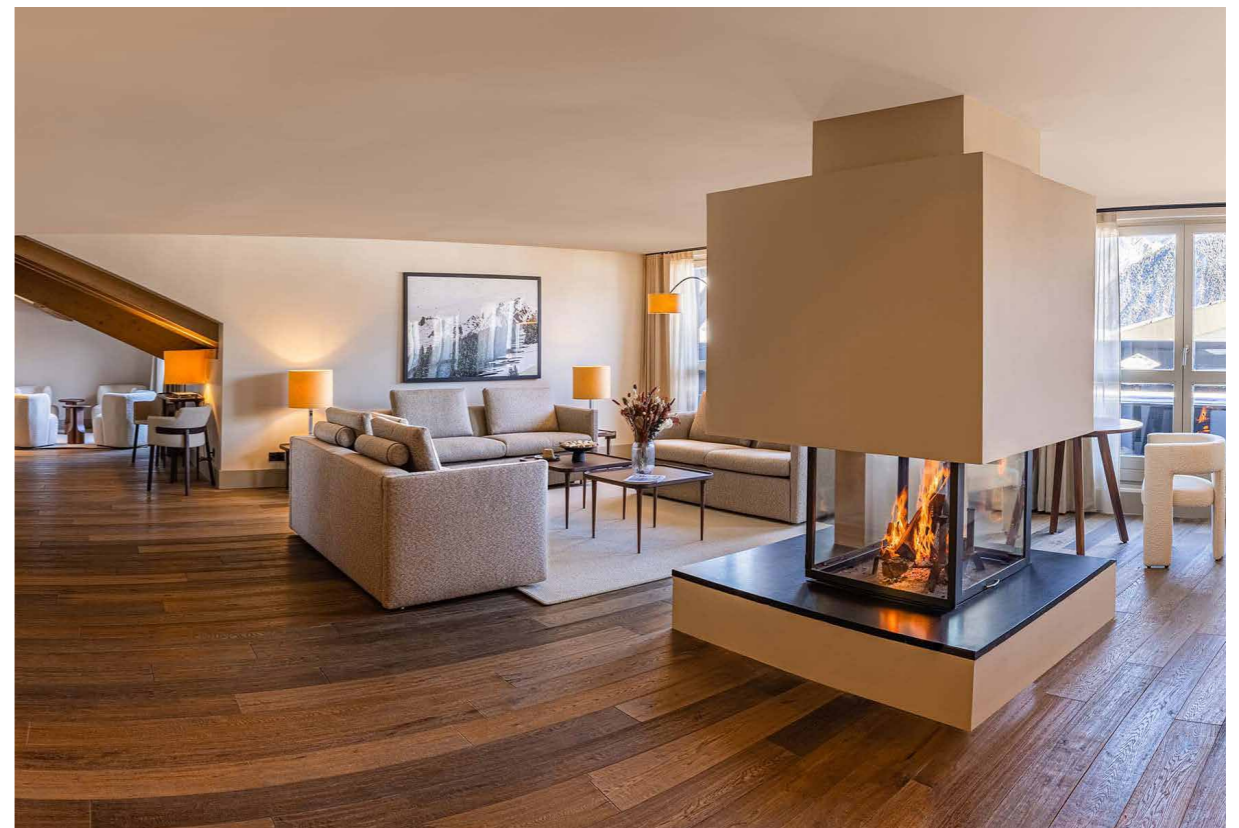
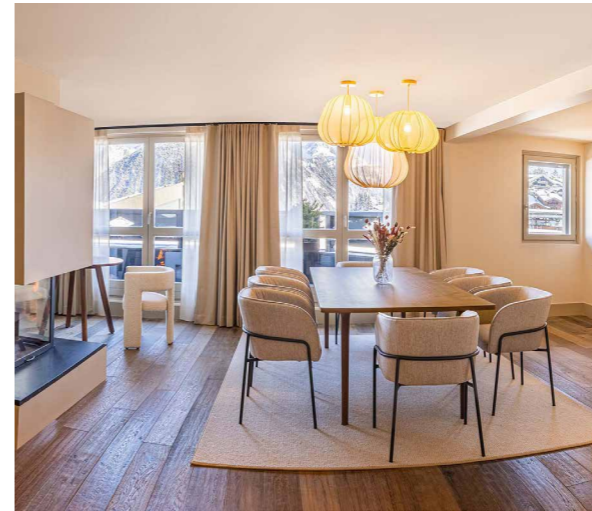
Please note this accommodation includes 4 sofa beds (160x200cm) which can accommodate up to four additional children.

Eating

You'll enjoy bed and breakfast accommodation at The Penthouse. Enjoy a scrumptious buffet breakfast in the Le Bar Sauvage restaurant.

Room service is available 24 hours a day with delicious dishes to suite all tastes, palates and moods.

The Bar Sauvage offers an intimate yet electrifying atmosphere and offers a refined cocktail menu with a unique Japanese touch – Geisha Sauvage – introducing the subtlety of shiso and yuzu, along with a wide selection of hot and cold sakes.





The Penthouse

Kids

The central location of The Penthouse certainly will assist guests with little legs and you can be back in the comfort of our accommodation within minutes of being out in the snow. Kids of all ages are sure to love the heated indoor swimming pool and older kids may also enjoy the fitness centre.

Children under 12 years old are welcome in the Spa area from 10am to 12am and from 4pm to 6pm, under parental supervision and with silent respect.

A baby-cot for children up to 3 years old can be arranged on request.

Location

The Penthouse is located in the centre of Courchevel and just two minutes stroll to the main lifts.

The nearest airport is Chambéry, approximately 1 hour 30 minutes drive, whilst Grenoble, Lyon and Geneva airports are all under a 2 hour 30 minutes drive from the hotel. Moutiers rail station is also just 30 minutes' drive.

There is also an altiport in Courchevel 1850 for those travelling by helicopter or private jet.

Staff

Firefly pre-arrival concierge service

Chalet staff include:

Concierge
Housekeeper

Childcare can be arranged on request.

Facilities

Mountain views
Central fireplace
Separate TV room
Fully equipped kitchen and bar
Almost ski-in/ski-out
2 balconies
Access to hotel and Spa by Sothys facilities: indoor heated swimming pool/sauna/steam room/treatment cabins/fitness centre/Le Bar Sauvage restaurant and Ski shop by ZAI

