



Le Chalet Lech



What we love...

We love the open fireplace on the terrace - and the amazing views of the Omeshorn.

Le Chalet really is 'The' Chalet. This luxury ski property in Oberlech is something rather special, offering all the facilities of a high-end boutique hotel, along with the privacy and quiet of a private chalet.

Natural materials, such as wood and stone, are used throughout for a relaxed feel, while outstanding mountain views help bring nature right into Le Chalet. Those views really are all the artwork you need, but the interiors have been thoughtfully designed to incorporate sumptuous furnishings, beautiful colours and all the tech you could wish for, from Revox sound system to iPad controllable lighting. The entire upper floor is given over to relaxing and dining with loved ones, with a contemporary dining area, blessed with comfortable seating for long, leisurely meals, and a sociable living space with curved sofas and cosy armchairs, just made for catching up with friends after a day on the slopes. A bar is always open for drinks, and the fire is always roaring, waiting to welcome you in from the snow.

The home fires are kept burning outdoors, too, with the well-designed terrace also boasting

its own open fireplace, as well as outdoor living and dining spaces and that magnificent mountain view.

On snowy afternoons, there's plenty to keep you busy at Le Chalet, from a movie in the separate luxurious TV room with bar, to a few hours spent in the large spa area, which includes swimming pool with whirlpool loungers, sauna, Hammam, infra-red cabin and relaxation space.

With a flight of staff, all prepped to take care of your every whim, you should never have to lift a finger. To ensure you return home completely rested, the seven luxury bedrooms are all designed to complete your total relaxation. All have mini bars and Nespresso machines for your morning coffee, as well as balcony or garden access so you can enjoy your first caffeine hit of the day in the mountain air. Three of the suites even have their own open fireplaces.

It's hard to imagine anywhere cosier to lay your head, and hard to believe there's anywhere you'd rather stay than Le Chalet.



Le Chalet

Rooms

Le Chalet sleeps 14 guests across seven bedrooms.

Bedroom 1

Double bedroom with fireplace, walk-in wardrobe, mini-bar and Nespresso machine, access to balcony and terrace and en-suite bathroom

Bedroom 2 and 3

Double bedrooms with fireplaces, walk-in wardrobes, mini-bars and Nespresso machines, access to balconies/terraces and en-suite shower rooms

Bedroom 4

Double bedroom with mini-bar and Nespresso machine, access to terrace and en-suite bathroom

Bedroom 5, 6 and 7

Double bedrooms with mini-bars and Nespresso machines, access to balconies/terraces and en-suite shower rooms

Please note all beds are fixed doubles.

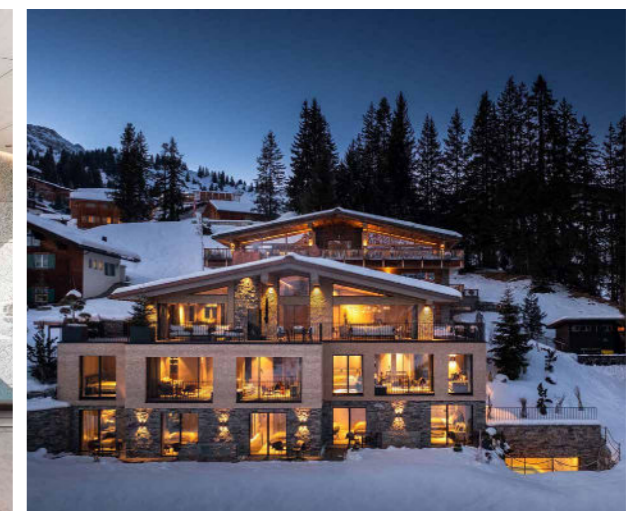
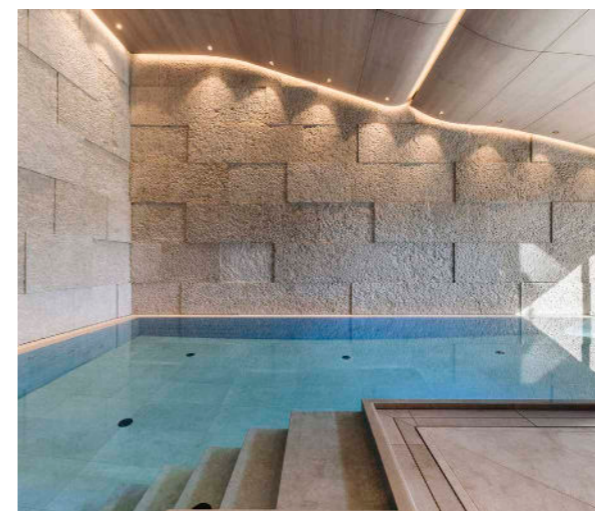
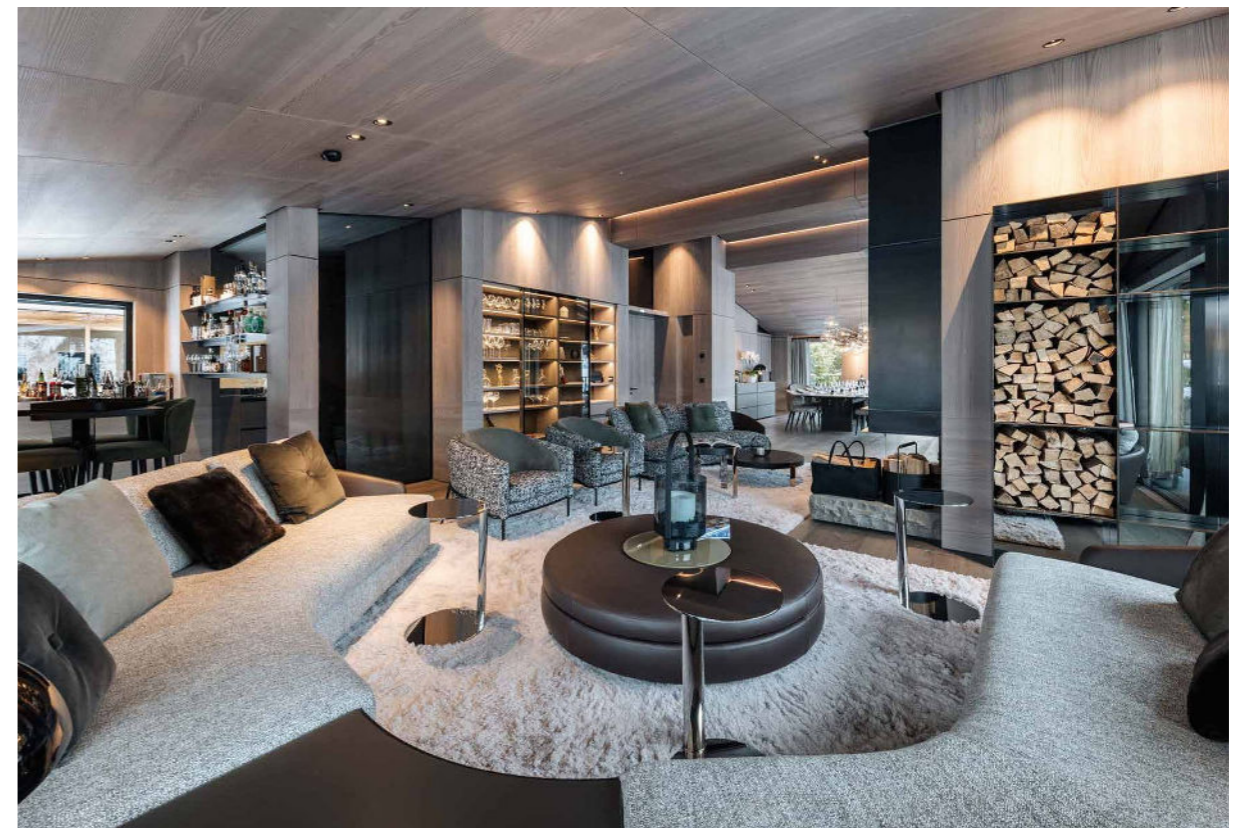
Eating

Good food and fine wines are a cornerstone of life at Le Chalet. A team of professional staff work away in the background, pampering you with delicious food and drink.

Each morning an a la carte breakfast, including regional specialities, is served to slowly welcome you to your day. Afternoon tea is ready and waiting for you when you return from the slopes, and your private chef will cook up a storm in the evenings, whether you want 8-course gala dinners or comfort food on the sofa. In fact, your every wish is your staff's command, from hearty weekend brunches to late-night snacks.

The bar has a round-the-clock bar tender, and you can be sure your drink will always be topped up, from the Champagne reception on your first night, to nightcaps when you all roll in from a night out in Oberlech's lively bars.

Please note that alcoholic drinks will be charged for separately.





Le Chalet

Kids

Children will be enchanted by the magic of Le Chalet, not least, arriving, James Bond style, by cable car from Lech! And the fun continues once inside and settled in.

Le Chalet has toboggans, sledges and snowshoes for you to use, as well as buggies for very little ones, so getting around should be stress free.

Kids of all ages will enjoy splashing in Le Chalet's beautiful indoor swimming pool. Or, if they're tired after ski school, they could simply cuddle up in the separate TV room with blankets and popcorn and watch a movie matinee.

The chalet staff are on hand to help with anything you need.

Staff

Firefly pre-arrival concierge service

Chalet staff include:

- Chalet manager
- Chalet hosts
- Private chef
- Housekeeper
- In-resort driver
- In-resort concierge service

Additional staff such as nannies and massage therapists can be arranged on request.

Location

This luxury ski chalet in Oberlech is ski-in/ski-out and perched right in the heart of all the action, between the hiking and skiing areas of the town. You'll have the whole of the Arlberg ski area at your disposal.

Getting here is an exciting experience, particularly in winter when it isn't possible to drive to Oberlech. Instead, you'll park your car in Anger underground car park in the centre of Lech (parking is included in the price) and arrive by cable car, with all your luggage being taken on ahead of you. Alternatively chalet staff can collect you with a car service.

The nearest airports are Innsbruck, approx. 1hr 30mins away or Zurich approx. 2hrs 30mins away.

Facilities

- Ski-in/ski-out
- Indoor swimming pool
- Sauna & Hammam
- Wine cellar
- Balconies
- Safe & Wifi
- Ski room
- Fitness room
- Wood-burning fireplaces
- Infrared cabin
- Revox sound system
- Terrace with open fireplace
- Separate TV room with bar

