



Apartment Everest 401 Courchevel 1650



What we love...

We love the beautiful mountain views from both the living area, thanks to the floor-to-ceiling windows, and the balcony.

Apartment Everest 401 is a luxury self-catered ski apartment in Courchevel 1650, offering the perfect setting for a memorable winter get-away with friends or family.

The apartment itself exudes contemporary style while maintaining a sense of alpine charm. The living area is flooded with light from the floor-to-ceiling windows and fabulous mountain views. Decide whether you want to enjoy the view from the comfort of the sofas in front of the wood-burning fireplace, or out on the balcony, up close and personal with the mountain air.

At the other end is the modern dining area, a dreamy space in which you'll enjoy leisurely dinners.

At the end of the evening, take after-dinner drinks back to the roaring fire or out onto the balcony to watch the stars twinkling over the mountains.

Then it's off to bed. Each of the luxury en-suite bedrooms is decked out beautifully with luxury linens, bathrobes, hairdryers and anything else you could need to make your own little home from home.

Your in-resort concierge will ensure everything is just as you like it, but you're never interrupted here. From the moment you set foot through the door, this private luxury apartment is all yours.



Apartment Everest 401

Rooms

Apartment Everest sleeps 8 guests across four bedrooms.

Bedroom 1:
Master bedroom with en-suite bathroom

Bedroom 2:
Double bedroom with en-suite shower room

Bedroom 3:
Double/twin bedroom with en-suite bathroom and separate shower

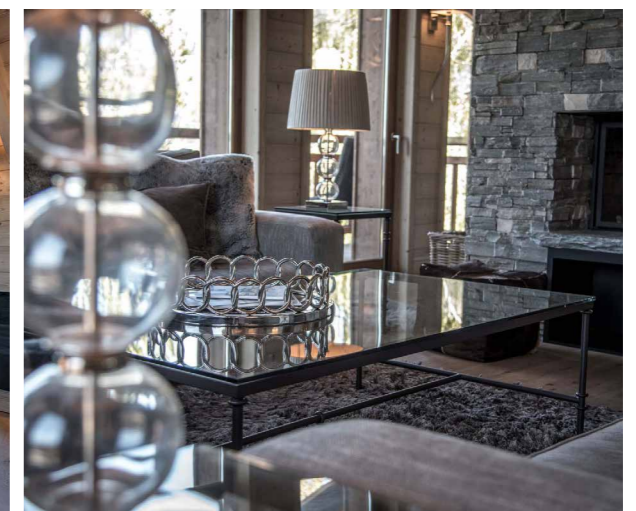
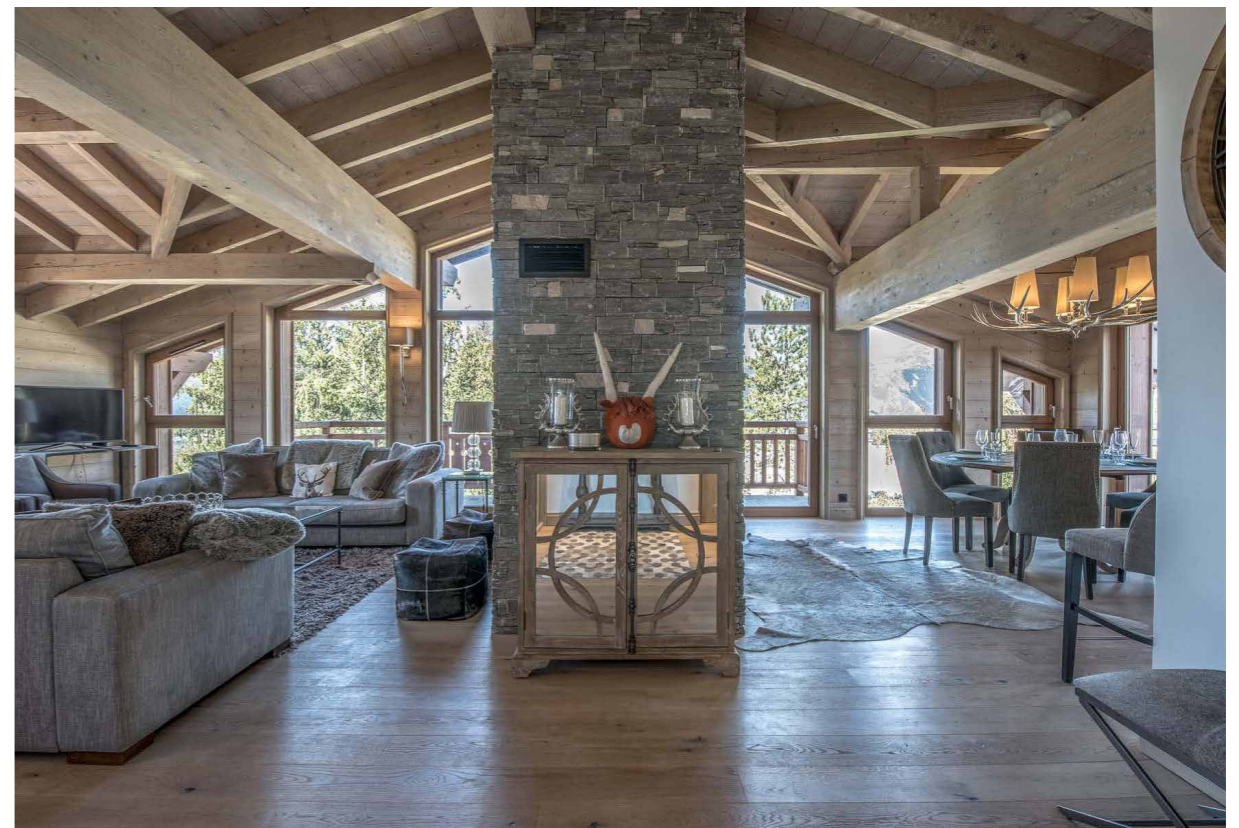
Bedroom 4:
Double/twin bedroom with en-suite bathroom

Eating

Apartment Everest is offered on a self-catered basis, allowing you to follow your own schedule on your luxury ski holiday.

With an easy stroll into the centre of town, you're perfectly placed to explore the wonderful restaurants Courchevel 1650 has to offer.

Alternatively, for those happy to cater for themselves, the kitchen is very well appointed with everything you need to make cooking a pleasure. At an additional cost, a shopping delivery can be arranged before your arrival so that your fridge and cupboards are fully stocked when you walk in the door.





Apartment Everest 401

Kids

Children are given a warm welcome at Apartment Everest. When you do venture out of your luxury ski chalet with the kids, you're perfectly placed to do so with both the lift station and resort centre just moments away.

Two of the bedrooms can also be arranged as twins, offering flexibility for those travelling with children. Baby cots and highchairs can be supplied for infants and toddlers.

Childcare and ski lessons can also be arranged on request.

Location

Apartment Everest is located just 10 minute walk to the centre of Courchevel 1650 and the main Ariondaz lift station.

The nearest airport is Chambéry, approximately 1 hour 30 minutes drive, whilst Grenoble and Lyon airports are approximately 2 hours 10 minutes and Geneva airport is 2 hours 20 minutes drive away.

Staff

Firefly pre-arrival concierge service

Chalet staff include:
Housekeeper (self-catered basis)
In-resort concierge service

Additional staff such as nannies and massage therapists can be arranged on request.

Facilities

Wood-burning fireplace
Wifi
TV
Shared ski room
Balcony
Fully fitted kitchen
Open-plan living area
Indoor parking for 2 cars

