



Penthouse B

Courchevel 1850



What we love...

We love the private spa area on the ground floor, accessed with a code via a lift, and including a Jacuzzi, sauna and Hammam.

Perched at the top of a beautiful building, right on the Bellecote piste, is one of Courchevel's best-kept secrets. Penthouse B, Courchevel 1850, is a stylish and elegant duplex apartment, perfect for anyone who wants to make the most of this fabulous ski resort as well as enjoy plenty of privacy and quiet.

The design is typically Alpine but with a modern twist, with natural woods and stone combining beautifully with glass and chrome. And the vibe is as cosy as it is contemporary, with a roaring open fire at the heart of the living space and plenty of comfy seating nearby, ready for some premium lounging when you return from your skiing day.

Across the open-plan area is a dining room with enough space for everyone in your party to eat together, and a well-equipped kitchen – with all-important wine fridge and bar seating.

On snowy afternoons, take the elevator down to your private spa area and ease any aching limbs in the sauna and Hammam; or catch up on everyone's morning adventures, while watching the flames dance in the fireplace next to the Jacuzzi. Relaxation is as much a part of life at Penthouse B as good food and good ski, so throw yourself into it fully!

The three double bedrooms have each been designed with floor-to-ceiling windows that allow the light to flood in and give you outstanding panoramic views of the mountains that are a total joy to wake up to.

With all the little details taken care of, from top-of-the-range entertainment system to concierge on hand to book activities and surprises, Penthouse B, Courchevel 1850, might just be the perfect combination of peaceful retreat and high-octane adventure in one of the skiing world's best resorts.



Penthouse B

Rooms

Penthouse B sleeps 6 guests across three bedrooms.

Bedroom 1

Double bedroom on upper floor with en-suite bathroom

Bedroom 2

Double bedroom on upper floor with en-suite shower room

Bedroom 3

Double/twin bedroom on lower floor with en-suite shower room and separate WC across the hall

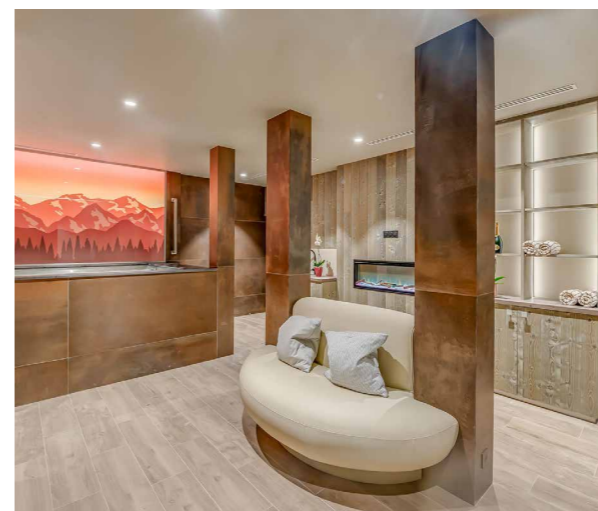
Eating

Penthouse B is a luxury B&B ski chalet penthouse where you'll have the opportunity to enjoy Courchevel's wonderful restaurant scene. A welcome hamper, including Perrier Jouet champagne, will be waiting for you on your arrival.

For breakfast each morning, your host will set up a continental spread and can also prepare eggs cooked to order. Breakfast will be cleared away, so you won't waste a moment hitting the slopes. Please note that breakfast service is included, whilst groceries will be charged for separately at the end of your stay.

This penthouse has a stunning kitchen that's a sociable space with bar stools gathered around an island and a dedicated wine fridge, make this a great place for pre-dinner drinks in the evenings.

If dining out, your dedicated concierge will be only too happy to help with restaurant tables and bar bookings for après ski.





Penthouse B

Kids

Children are made to feel most welcome at Penthouse B.

The property is ski-in/ski-out, making getting out onto the Bellecote Piste very easy. The Penthouse's staff can arrange for ski gear to be delivered directly to your apartment so you can get the kids kitted out in a stress-free environment.

Your concierge can also help with organising activities and experiences to keep children busy when they aren't at ski school, from husky-sledging and visiting an igloo, to magic shows in your apartment.

Location

This luxury ski chalet in Courchevel 1850 is perched right on the Bellecote Piste with ski-in/ski-out access.

The nearest airport is Chambéry, about 1 hour 30 minutes drive away. Grenoble and Lyon are both 2 hours 10 minutes away and Geneva 2 hours 20 minutes.

Staff

Firefly pre-arrival concierge service

Chalet staff include:

- Host
- Daily housekeeping
- In-resort concierge service

Additional staff such as nannies and massage therapists can be arranged on request.

Facilities

- Ski-in/ski-out
- Sauna
- Hamam
- Indoor Jacuzzi
- Wood-burning fireplace
- Fully-equipped kitchen
- Wifi
- Balcony
- Mountain views
- Ski and boot storage locker
- Private parking for 2 cars
- Open-plan living and kitchen area

