



## Chalet Alia Grindelwald



### What we love...

We love the wellness area, with its fitness suite, sauna and Hammam; the perfect place to relax after a day on the mountain.

With traditional Swiss chalet good looks and a vista straight out of 'The Sound of Music', Chalet Alia is a sight to behold as you approach.

Step inside, and a pared-back Scandi style pervades, with light woods and a relaxing palette of neutrals and coastal blues, with an added dose of cosiness. A vaulted, double-height ceiling, huge windows and roof lights allow the sunshine to flood in during the day, and at night you can watch the stars twinkle on, and perhaps have a closer look at some of them, using the chalet's own telescope.

The heart of Chalet Alia is the top-floor living space, where a roaring fire burns on chilly nights, and L-shaped sofas and mid-century chairs are gathered around its warmth. Nearby is a dining area with long table, comfy seating and statement lighting, where you'll

enjoy long, leisurely meals in the evenings, whether you've ordered in or cooked yourselves. There's also a cosy TV lounge that's the perfect spot to curl up with a film for cosy afternoons.

On the ground floor is a relaxing wellness area, which includes a sauna and Hammam where you can soothe any slopes-weary limbs, as well as a fitness suite with techno gym equipment.

Chalet Alia has five bedrooms, spread over three floors. Four spacious rooms with comfy king-sized beds and en-suite bathrooms. The fifth bedroom is a twin bedroom with a private, separate bathroom and WC. All the bedrooms have access to either a terrace or a balcony from which you can enjoy your morning coffee with mountain views.



# Chalet Alia

## Rooms

Chalet Alia sleeps 8 + 2 guests across five bedrooms

### Bedroom 1

Double bedroom on the ground floor with king-size bed, en-suite bathroom and terrace access

### Bedroom 2

Double bedroom on the first floor with king-size bed, en-suite bathroom and balcony access

### Bedroom 3

Twin bedroom on the first floor with separate shower room and balcony access

### Bedroom 4

Double bedroom on the first floor with king-size bed, en-suite bathroom and balcony access

### Bedroom 5

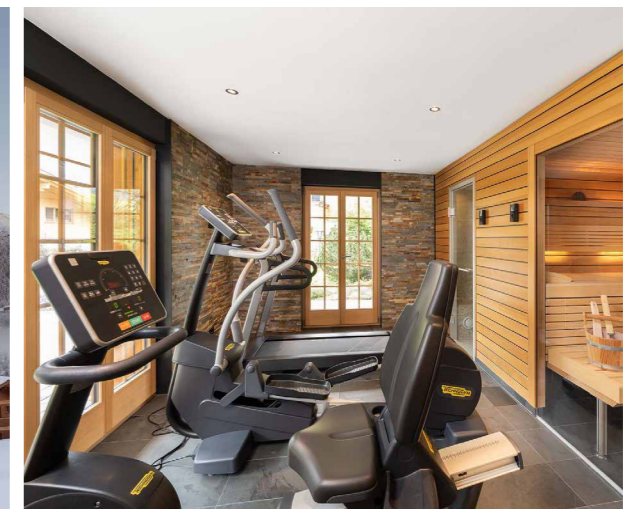
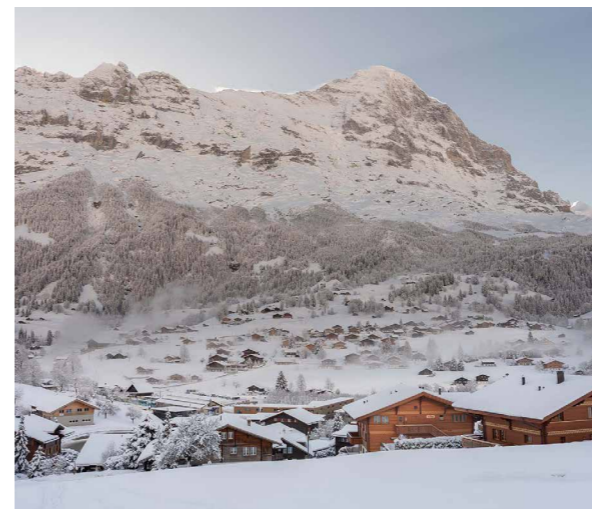
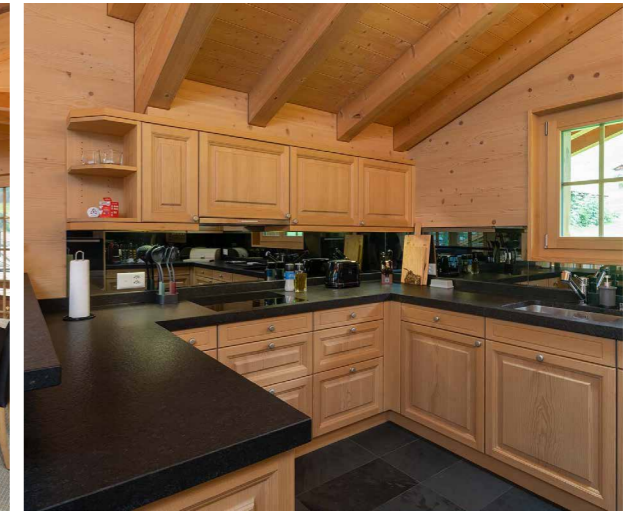
Double bedroom on the top floor with king-sized bed, en-suite bathroom and balcony access

## Eating

This luxury self-catering ski chalet has all you need for a week's stay in Grindelwald. Chalet Alia has a beautifully equipped kitchen with the all-important coffee machine and dishwasher. Nearby is a sophisticated and comfortable dining area with statement lighting, where you and your party can gather for evening meals and a few glasses of wine.

There's even an outdoor dining space in the garden, which is a great spot for breakfast or an early morning coffee with the mountain air.

On nights when you choose to eat out, the chalet's staff will be happy to make recommendations.





## Chalet Alia

### Kids

This family-friendly ski chalet has lots of space for children to play in, including some outdoor space, too.

Inside Chalet Alia, kids will enjoy stargazing using the magnificent telescope and chilling out in the TV lounge with flatscreen TV. Teens and tweens will be relieved to hear that Wifi is available throughout the property.

One of the luxury bedrooms is configured with twin beds, making it perfect for two kids to share.

Nannies and babysitters can be arranged in advance on request.

### Facilities

- Fireplace
- Sauna
- Hamam
- Wifi
- Lift
- Ski and boot room
- Terraces and balconies
- Mountain views
- Garage parking for 2 cars
- Wellness area with gym equipment
- Private garden with dining area
- TV lounge with Smart TV

### Location

Chalet Alia is a luxury ski chalet in Grindelwald, approximately a 6 minutes' walk to the V-Bahn and with views of the Eiger Monch and Jungfrau mountains. From there, the cable car takes you to the Eiger glacier and the Jungfrau mountain range.

The chalet is close to Grindelwald's shopping centre as well as to the station, if you're planning any day trips to surrounding towns and cities.

The best airport for Grindelwald is Zurich (2 hours away) or Basel-Mulhouse or Geneva (each 2 hours 30 minutes away). Bern is just an hour away but has fewer flights.

### Staff

Firefly pre-arrival concierge service

Chalet staff include:  
Housekeeper  
In-resort concierge

Additional staff such as nannies can be arranged on request.

