



Chalet Monet Courchevel 1850



What we love...

We love the tranquil swimming pool where you can stretch out and take in some lengths in the afternoons when you return from the slopes.

Inspired by one of the world's greatest artists, Chalet Monet is every inch as beautiful as one of the Impressionist's own works.

Rustic woods and a palette of bright colours bring old and new together in this traditional chalet where top-of-the-range gadgetry and designer interiors are perfectly matched with natural materials and simple style.

The second floor is home to the chalet's main living space, comprising a spacious sitting area with comfy curved sofa, TV and a huge statement fireplace, as well as a stylish dining room where you'll enjoy laid-back meals cooked by your private chef and fabulous views of the Vanoise peaks. The kitchen, with beautiful tiled walls and all the gadgets you could need, is adjacent, waiting for you to whip up homemade fondues and coffees to enjoy out on the terrace in the mountain air.

On snowy afternoons, once you've returned from the slopes and refuelled with hot drinks and homemade cakes, head down to the spa area, with indoor swimming pool, Jacuzzi and Hammam as well as a massage room where you'll find yourself thoroughly pampered and party-ready again, even after a busy morning on the piste.

After dinner, drinks and hours of chatting to loved ones, escape to one of the seven luxury en-suite bedrooms. Be sure to arrive early to bag the amazing master bedroom, with fireplace, relaxation area, home office, balcony, walk-in closet and its own Jacuzzi and steam shower in the bathroom.

With private chef, butler, housekeeper and driver on hand to fulfil your every need, and a super-convenient ski-in/ski-out location, you'll want for nothing during a stay at Chalet Monet.



Chalet Monet

Rooms

Chalet Monet sleeps 14 guests across seven bedrooms.

Bedroom 1

Double bedroom on level 1 with TV and en-suite shower room

Bedroom 2

Double bedroom on level 2 with TV, terrace access and en-suite shower room

Bedroom 3

Double bedroom on level 2 with TV, office space, terrace access and en-suite shower room

Bedroom 4

Double bedroom on level 2 with TV, balcony and en-suite shower room

Bedroom 5

Double bedroom on level 2 with TV, office space, balcony and en-suite bathroom

Bedroom 6

Double bedroom on level 4 with balcony and en-suite shower room

Bedroom 7

Master bedroom on level 4 with fireplace, TV, balcony, office space, dressing room and en-suite bathroom with Jacuzzi and steam shower

Please note all beds are fixed doubles.

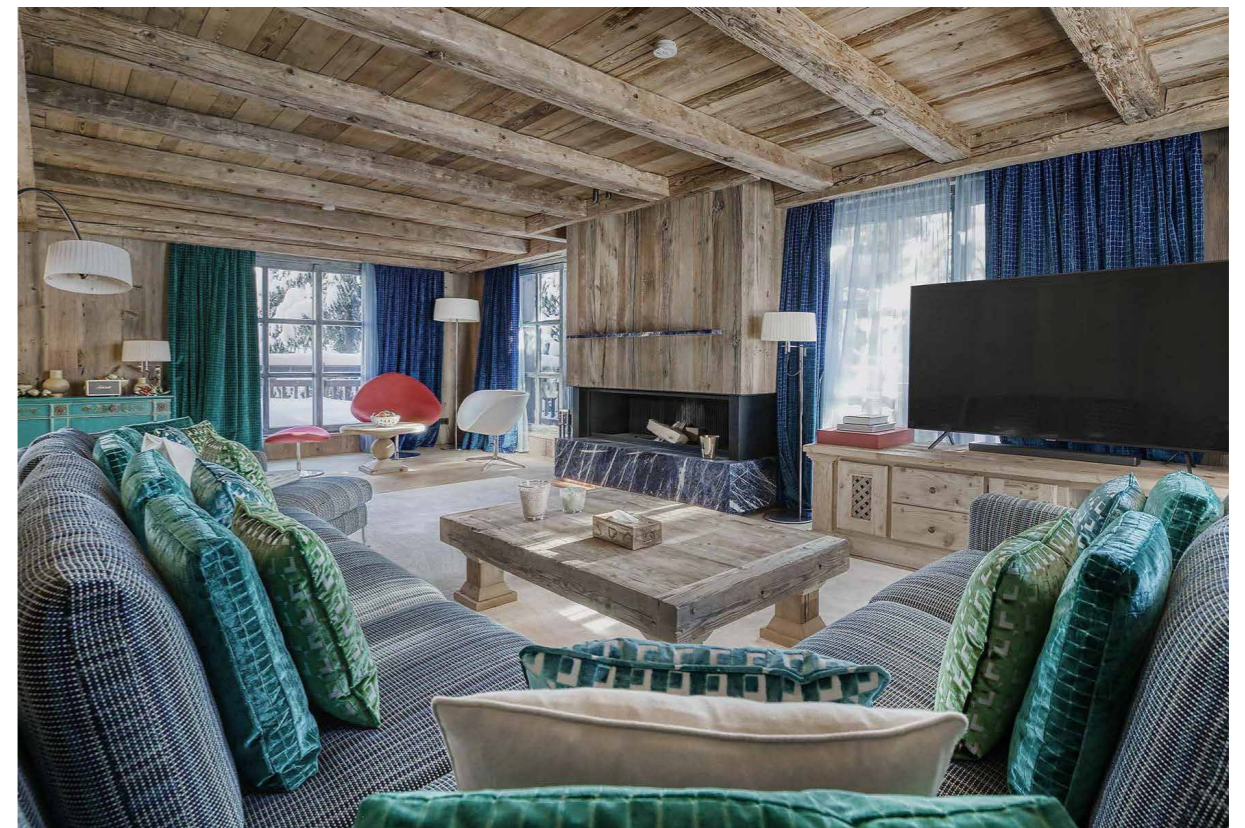
Eating

Good foods and fine wines are a vital part of a stay at Chalet Monet and a team of talented and experienced catering staff are on hand for everything you need. Champagne, a welcome basket and flowers are also ready to greet you when you arrive.

Each morning your private chef will prepare a delicious and hearty breakfast to set you up for a day on the Bellecote piste. When you return to Monet from the slopes, a warming afternoon tea will be ready for you and then there's just enough time to enjoy the spa facilities before a gourmet dinner is served in the beautiful dining area. If you prefer to eat out in the evenings, your chef can provide lunch instead.

The chalet's kitchen comes equipped with a dishwasher, fridge and freezer, grill-stone and fondue appliance to allow for cosy self-catered nights in. And staff will be happy to help you make restaurant bookings in Courchevel's finest eateries on evenings when you prefer to eat out.

Please note that cost of all food and drinks will be charged for separately, allowing the chef to tailor menus exactly to your preferences.





Chalet Monet

Kids

Chalet Monet is a family-friendly luxury ski chalet in Courchevel where younger guests are made most welcome.

The property has a beautiful kids' playroom, where soft rugs and beanbags provide space for little ones to crawl and roll comfortably, and enough toys to keep everyone occupied are stacked on the shelves.

An indoor swimming pool offers room to splash and swim off any excess energy not burnt off at ski school and there's also a TV in the lounge area, where kids can relax in front of a movie on snowy afternoons.

Nannies and babysitters can be booked on request.

Facilities

Ski-in/ski-out
Indoor swimming pool
Hamman
Indoor Jacuzzi
Wine cellar
Wifi
Massage room
Ski room
Children's playroom
Wood-burning fireplaces
TV with international channels
Terrace & balcony with mountain views

Location

This luxury ski chalet in Courchevel 1850 is perched right on the edge of the Bellecote piste in a ski-in/ski-out location, so you never waste a moment getting to the snow.

The property is just 250 metres from the Verdon ski lift, the ski school and the centre of Courchevel.

A 12-hours-a-day driver service means you can always get to wherever you need to be, stress free.

The nearest airport is Chambéry, 1 hour 30 mins drive away, and Grenoble and Lyon are each just over 2 hours. Geneva airport is 2 hours drive away and there's also an altiport in Courchevel 1850 for those travelling by private jet.

Staff

Firefly pre-arrival concierge service

Chalet staff include:

Chef (10h/day)
Butler (10h/day)
Housekeeper (10h/day)
In-resort driver (12h/day)
In-resort concierge

Additional staff such as nannies and massage therapists can be arranged on request.

