



Swiss Apartment Gstaad



What we love...

We love the home-from-home feel of this serviced apartment that allows you to relax as soon as you walk through the door.

Make yourself at home in this luxury ski chalet in where you can enjoy total peace and privacy. The Swiss Apartment, Gstaad, is a stylish and contemporary property, designed in neutral shades and natural materials, bringing a calming, relaxed feel.

The open-plan living space has a pared-back yet cosy feel, with its wood-clad walls and soft lighting. A capacious sofa and comfy armchairs are gathered between a roaring fireplace and a flatscreen TV, where you can all sprawl in front of a film on snowy afternoons. Nearby is a modern dining room designed for intimate meals with friends and family, and a well-equipped kitchen with a sociable bar area where guests can perch with a glass of wine and chat to whoever is cooking.

A spacious terrace with al fresco sitting and dining spaces offers mountain views, so you can take your morning coffee outside and take in the scenery and the fresh air – always an enlivening way to start the day.

The central location of the Swiss Apartment means you can be out at the lifts moments after finishing your breakfast. With a ski equipment rental service offered at the apartment, getting out onto the snow couldn't be easier.

At the end of each day, retire to one of the relaxing bedrooms with the softest of sheets and only the plumpest of pillows to guarantee total comfort and sweet dreams.



Swiss Apartment

Rooms

Swiss Apartment sleeps 6 guests across three bedrooms.

Bedroom 1

Double bedroom with king-sized bed and en-suite bathroom

Bedroom 2

Double bedroom with king-sized bed and en-suite bathroom

Bedroom 3

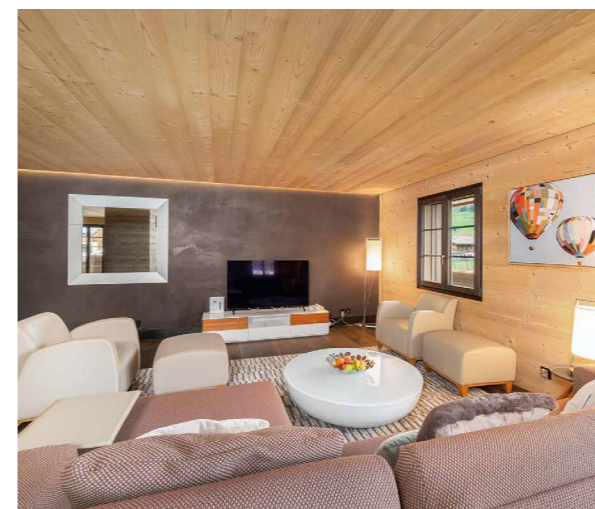
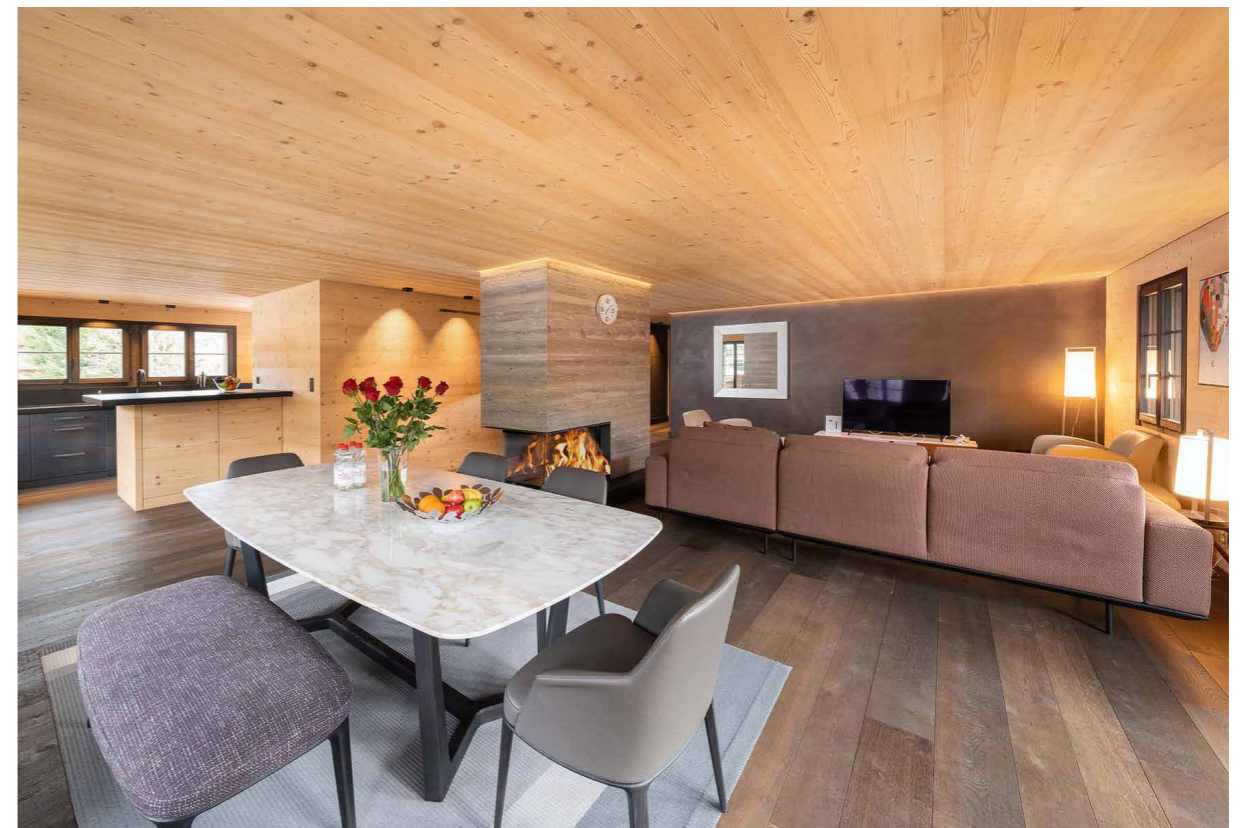
Double bedroom with king-sized bed and a separate shower room

Eating

The Swiss Apartment has a well-equipped contemporary kitchen with everything you could need, including hob, oven, fridge and dishwasher, as well as a Nespresso machine, with Nespresso pods and selection of teas topped up daily.

There's a comfy and cosy dining area in the open-plan living space, close to the fire, for days when you're catering for yourselves or fancy an evening in. There are also outdoor dining areas on the apartment's spacious terrace.

If you want to explore the area's food scene, Gstaad is also home to more than a hundred restaurants, serving traditional Alpine fare, Michelin-starred gourmet meals, contemporary comfort food and everything in between.





Swiss Apartment

Kids

A modern, convenient home from home, the Swiss Apartment is a family-friendly ski chalet that's great for parents of young children and teens alike. Open-plan spaces, including a large terrace, give kids plenty of space to play and this apartment's central location, close to the lifts and the town, makes it a convenient choice for those travelling with little ones.

Nannies and babysitters can be arranged on request.

Facilities

- Fireplace
- Fully-equipped kitchen
- Air-conditioning
- Wifi
- Balconies
- Satellite TV
- Garage parking
- Nespresso coffee machine
- Safety deposit box
- Swiss Alps views
- Close to town centre
- Close to ski lift

Location

This luxury ski chalet in Gstaad is located right in the heart of the town, close to all the action, and just five minutes from the train station.

Several lifts are just a stone's throw away, with Eggli the closest, just 150 metres from the front door, and Zuckerli, Rutti and Bodme all less than half a kilometre away.

If you want to explore further afield, Bern is only an hour away and Geneva and Zurich just two hours away.

The nearest airport is Bern, around 1 hour 30 minutes away by car. Geneva airport is 2 hours away and Zurich 2 hours 30 minutes.

Staff

Firefly pre-arrival concierge service

Chalet staff include:
Housekeeper
In-resort concierge

Additional staff such as nannies can be arranged on request.

