



Chalet Beloukha Courchevel 1300



What we love...

We love the children's playroom, imaginatively designed and brimming with toys and games.

Tucked away in a quiet corner of the authentic Alpine village of Courchevel 1300, this stunning luxury ski chalet has a private, peaceful location yet is just metres from the nearest piste. Strewn with beautifully crafted furnishings, second-hand art, and responsibly sourced wood, stone, and glass, Chalet Beloukha has an effortless charm.

The heart of the chalet is its inviting open plan living space, lovingly decorated in warm, neutral tones and flooded with light from the large windows. It's here that you'll gaze at the snowy mountain panoramas, bury yourself in a book in the reading corner, or sip a glass of wine by Chalet Beloukha's dramatic central fireplace. Nearby, the spacious dining area is perfect for

swapping stories of the slopes over a home-cooked family meal.

Younger guests will spend hours in the children's playroom, with its den-like design and many toys and games. If you can tear yourself away from the chalet, the generous ski room makes preparing for the slopes hassle-free, with plenty of storage, ski lockers, and boot warmers to ensure you start your day with toasty-warm toes.

Featuring five cosy en-suite bedrooms, including the fabulous master bedroom with its own balcony and sitting area, Chalet Beloukha has plenty of space for the whole family or large groups of friends. Warm and welcoming yet exceptionally elegant, it promises an unforgettable luxury ski holiday.



Chalet Beloukha

Rooms

Chalet Beloukha sleeps 8 + 4 guests across five bedrooms.

Bedroom 1

Master bedroom on level 1 with en-suite bathroom, separate WC, safe, dressing & living room and balcony access

Bedroom 2

Bunk room on ground level with double beds and en-suite shower room

Bedroom 3

Double/twin bedroom on ground level with en-suite shower room and separate WC

Bedroom 4

Double/twin bedroom on level 1 with en-suite shower room and separate WC

Bedroom 5

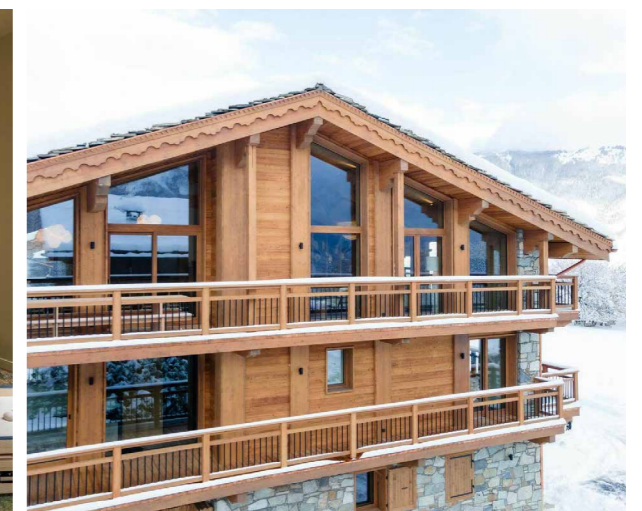
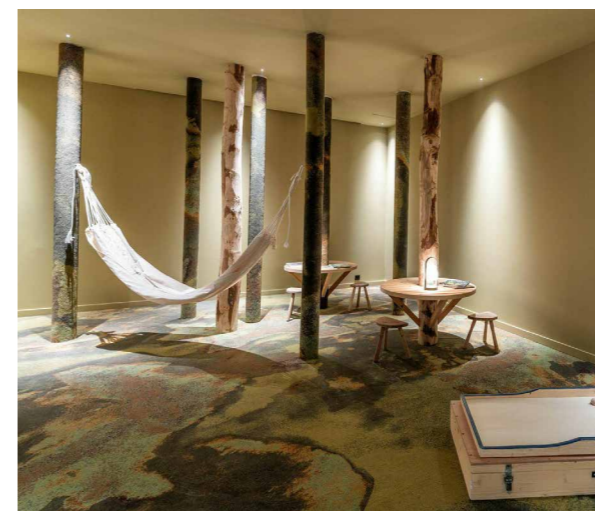
Double bedroom on level 1 with en-suite shower room and separate WC

Eating

At Chalet Beloukha, breakfast service is provided (cost of ingredients charged separately) so you'll begin each day of skiing with a delicious, nutritious meal.

For lunches and dinners, you're free to eat out on the mountain, or try one of the many superb restaurants within walking distance of the chalet. From hearty local cuisine to fine dining establishments, there's something to suit all palates in Courchevel 1300.

Alternatively, if you are passionate about cooking and entertaining, you can make the most of Chalet Beloukha's sociable open plan kitchen and enormous dining table. There is even a fondue set and a raclette machine for you to serve a Savoyard feast to your friends and family.





Chalet Beloukha

Kids

Chalet Beloukha is a haven for youngsters. There are plenty of nooks for them to escape to, such as the kid's bedroom with its double bunk bed and slide, or the reading corner where they can sprawl out with a book. Enjoy family time playing board games around the fire, or rustle up some popcorn for a movie night in front of the TV.

The crowning glory, however, is the delightful children's playroom. Designed like a secret den, it's filled with toys and games, the ideal place for little ones to hunker down for the evening.

When it's time to retreat to the chalet after a day on the slopes, the ski-in access is a blessing with children in tow. And if the walk into the village centre is too tough on little legs, the in-resort driver service will whisk you back and forth.

Staff

Firefly pre-arrival concierge service

Chalet staff include:

Housekeeper

In-resort driver service

Additional staff including a private chef, nannies, massage therapists and more can be arranged on request.

Location

Chalet Beloukha is situated in Courchevel 1300 (Le Praz), just 400 metres from the centre and 500 metres from the closest ski lifts.

Subject to good snow conditions, it enjoys ski-in access from the nearest piste, which is just 20 metres away.

The nearest airports are Chambéry, about 1 hour 15 minutes away, and Geneva, around 2 hour 15 minutes.

Facilities

- Ski-in
- Wood-burning fireplace
- Wine cellar
- Fully-equipped kitchen
- Wifi
- Ski and boot room
- Sun terrace
- Garage parking
- Reading area
- Panoramic views
- Children's games & playroom

