



Chalet Khoton Courchevel 1300



What we love...

We love the magnificent spa, featuring Japanese bath, saunas, Hammam, and an idyllic indoor swimming pool.

Nestled in a quiet area of charming Courchevel 1300, this luxury ski chalet with swimming pool has been designed with serenity and relaxation in mind. Every element has been chosen to create a calm and soothing atmosphere, from the spectacular spa to the warm, welcoming interiors making clever use of natural materials.

It's hard to resist skipping skiing in favour of recuperating in Chalet Khoton's beautiful spa. Inspired by the bow of a catamaran, its focal point is the shimmering indoor swimming pool with a relaxation area suspended over the water. Here you'll also find Nordic and Japanese bath, Finnish sauna, bio sauna, a Hammam, and a herbal tea room. Re-energise in the fitness area, or ease weary muscles with a treatment in the massage room.

Those who manage to tear themselves away from the spa are rewarded with ski-in access from the enormous ski area, just begging to be explored. Return to Chalet Khoton's generous ski room, with heated boot warmers and ski lockers. Upstairs in the enchanting living space, all eyes are drawn towards the striking fireplace, where a crackling fire beckons. Grab a book from the reading area or admire the superb views of the surrounding peaks through the floor-to-ceiling windows.

With a friendly, open plan layout, the kitchen and dining area makes the perfect setting for family meals or an apéritif with friends. When it's time to catch some much-needed rest, there are five comfortable, en-suite bedrooms to choose from. For larger groups, Chalet Khoton can be connected to Chalet Irbis to accommodate up to 20 guests.



Chalet Khoton

Rooms

Chalet Khoton sleeps 10 guests across five bedrooms.

Bedroom 1

Master/twin bedroom on level 1 with en-suite bathroom, separate WC, safe, dressing & living room and balcony access

Bedroom 2

Double/twin bedroom on level 1 with en-suite shower room, separate WC and balcony access

Bedroom 3

Double bedroom on level 1 with en-suite shower room, separate WC and balcony access

Bedroom 4

Double/twin bedroom on ground level with en-suite shower room and separate WC

Bedroom 5

Double/twin bedroom on ground level with en-suite shower room, separate WC and terrace access

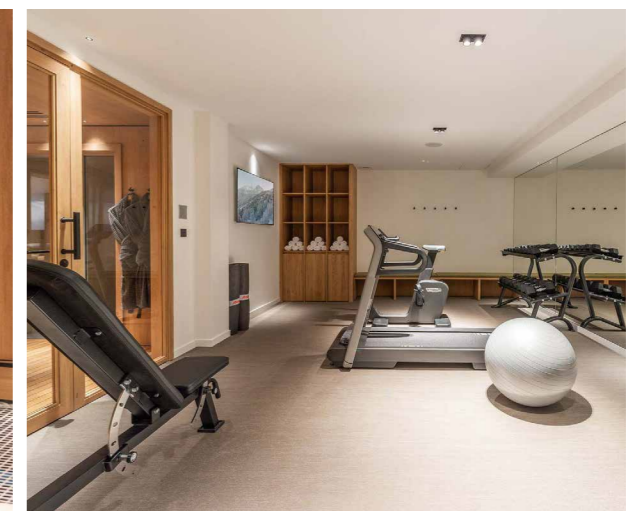
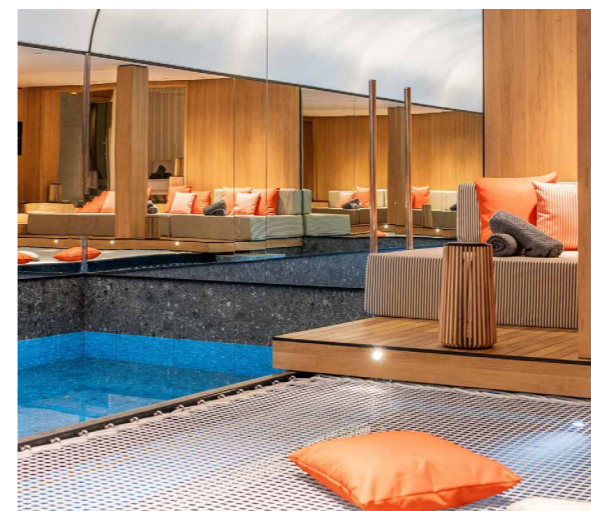
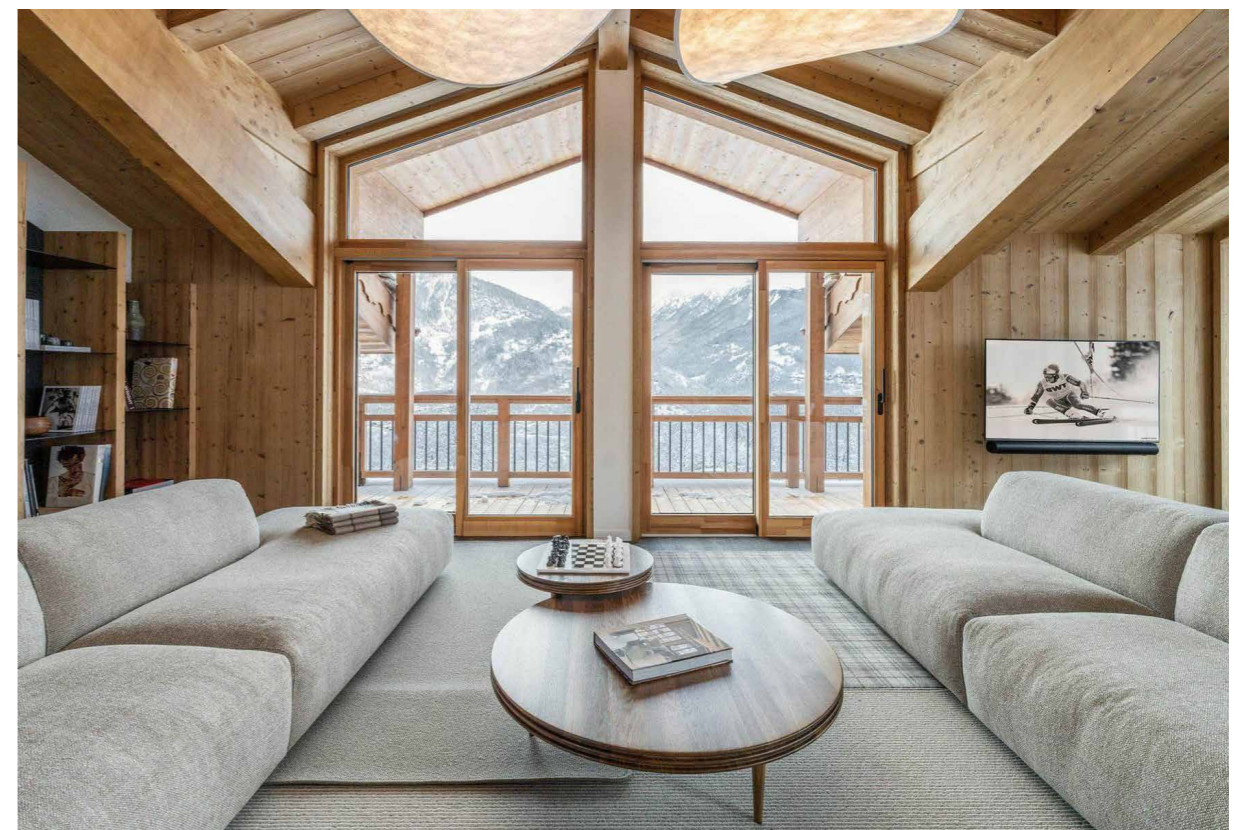
For larger groups, Chalet Khoton can be connected via the wellness area to next-door, Chalet Irbis, to accommodate up to 20 guests.

Eating

Breakfast is served each morning in Chalet Khoton's spacious dining area (cost of ingredients charged separately), setting you up perfectly for a day of exploring on skis.

For lunches and dinners, you can sample Courchevel's fantastic restaurants. This will come as excellent news to gourmets who wish to take advantage of the valley's reputation for Michelin stars.

For those who love to cook, the well-appointed, open plan kitchen is ideal for entertaining family and friends while they enjoy some nibbles nearby. There's even a fondue set and raclette machine so you can tuck into the ultimate Savoyard feast in the comfort of your own chalet.





Chalet Khoton

Kids

Children will love Chalet Khoton's delightful indoor swimming pool, with its catamaran-style chill-out area suspended over the water, the ideal spot for teens to make their own. The main living space is filled with cosy corners for them to retreat to, such as the reading area where they can dive into one of the books about sports or nature. For family nights spent around the fire, there's an impressive selection of board games, or little ones can sprawl out on the comfortable sofas in front of a film.

Situated close to the piste, Chalet Khoton is easy to ski back to when younger legs get weary. If you'd like to head into the village centre for ski school or something to eat, the in-resort driver service is available to help load up your children and take you back and forth.

Staff

Firefly pre-arrival concierge service

Chalet staff include:

Housekeeper

In-resort driver service

Additional staff including a private chef, nannies, massage therapists and more can be arranged on request.

Location

Chalet Khoton enjoys a ski-in location (in good snow conditions), 20 metres from the Jean Blanc piste in Courchevel 1300.

The centre of the village is 400 metres away, with the nearest ski lifts 500 metres away.

The chalet is 1 hour 15 minutes from the closest airport, Chambéry, and 2 hours 15 minutes from Geneva Airport.

Facilities

Indoor swimming pool

Ski-in

Hammam

Wood-burning fireplace

Wine cellar

Fully-equipped kitchen

Wifi

Balconies

Ski and boot room

Finnish sauna

Fitness area

Garage parking

Treatment room

Reading area

Panoramic views

Bio sauna

Close proximity to slopes

