



Chalet Ibron Zermatt



What we love...

We love the outdoor terraces, some with mountain or town views, others designed to be open-air living and dining spaces.

Perched on the side of the mountain, yet just a short walk, through a tunnel, from the lifts and the centre of Zermatt, Chalet Ibron has a remarkable location.

Step inside, and the light, bright interiors offer a relaxed welcome. Modern-Alpine style, with warm woods, rustic stone and cosy accessories, combine with contemporary furnishings and plenty of natural light to bring a stylish yet laid-back feel.

At the heart of the property are the ground-floor living areas, gently heated by a rotating fireplace in the centre. The cosy lounge space offers the perfect spot to take in the views. Nearby is an open-plan kitchen and dining room with a long, refectory-style table where you and your friends and family can enjoy relaxed, leisurely meals. French doors open out onto a spacious terrace.

All the practicalities have been carefully considered. A ski and boot room is located in the tunnel so you can kick off all your wet gear before entering the house, and there's also a useful utility room.

However, the little luxuries are just as important here, from the en-suite sauna in the master bedroom to the Nespresso coffee machine and raft of cable channels available.

Everything is close by, too, from the ski lifts to the charming town centre, but your weary legs are still sure to be glad of the four super-comfy bedrooms at the end of each day's adventures. From beautiful bath tubs and balconies, to dressing rooms and study areas, each room is special in its own way, and sure to bring sweet dreams.



Chalet Ibron

Rooms

Chalet Ibron sleep 8 guests across four bedrooms. All rooms have TV/ DVD players.

Bedroom one

Double/twin bedroom on the first floor with en-suite shower room

Bedroom two

Double/twin bedroom on the first floor with shared bathroom

Bedroom three

Master/twin bedroom on the second floor with en-suite bathroom, sauna and balcony access

Bedroom four

Double/twin bedroom on the second floor with shared bathroom

Chalet Ibron, Chalet Gemini, Chalet Castor, and Chalet Pollux, are a group of four chalets which can be taken together to sleep up to 34 guests.

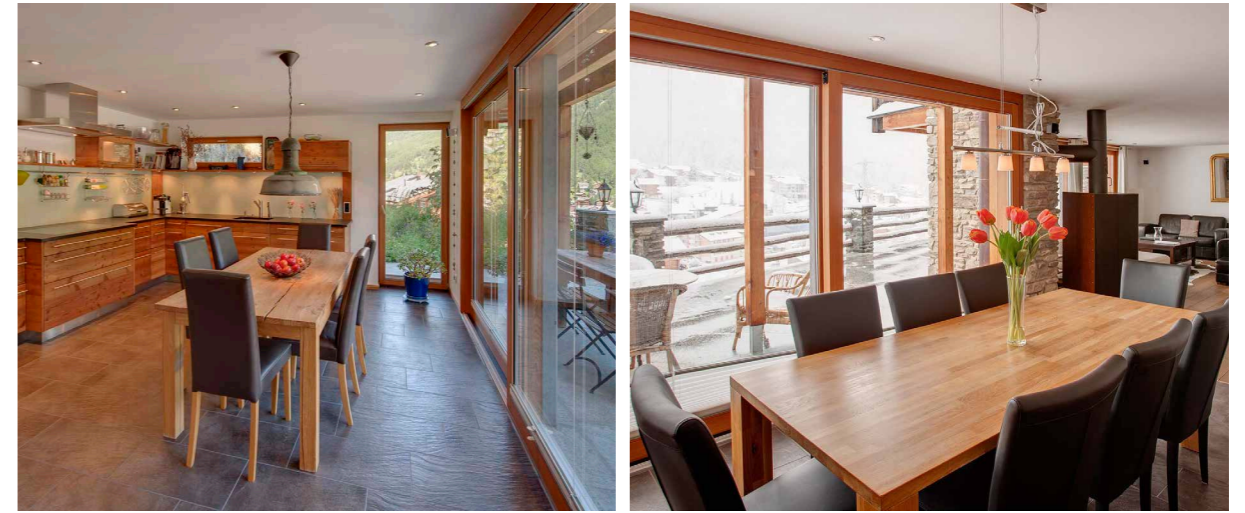
Eating

At Chalet Ibron, you have total freedom to eat however you want, with the property available on either a fully catered, bed and breakfast, or self-catered basis.

An open-plan kitchen and dining space has been beautifully designed to be both relaxing and sociable, making it the perfect backdrop for meals, whether you're being served a gourmet dinner by your chef or enjoying some home-cooked comfort food you've cooked with friends.

Should you choose a catered stay, it will begin with a champagne reception with canapés to welcome you to your holiday. From there, on six days of the week, your chef will provide a cooked breakfast each morning, followed by a hearty afternoon tea when you return from the slopes. Later, you'll enjoy a four-course dinner with carefully selected house wines, and the bar is, of course, always open.

Zermatt also has a wonderful food scene, which you'll want to enjoy, from Michelin-starred restaurants to cosy cages on the mountain.





Chalet Ibron

Kids

Chalet Ibron is a family-friendly ski chalet set in the car-free Zermatt. As well as boasting excellent ski schools and kids' clubs, Zermatt also offers plenty of outdoor playgrounds, ice-skating rinks, and more, as well as activities for older kids such as snowboarding and tobogganing.

In the chalet itself, things are well designed for families, with all the bedrooms able to be configured as twins as well as doubles, giving you total flexibility for your party. There is cable TV in each of the bedrooms so kids have somewhere to chill out and watch cartoons or just escape the grown-ups for a while.

Nannies and babysitters can be arranged on request.

Staff

Firefly pre-arrival concierge service

Chalet staff include:
Chef (catered basis)
Chalet host (catered and B&B basis)
Daily housekeeping (catered and B&B basis)
In-resort concierge service

Additional staff such as nannies and babysitters can be arranged on request.

Location

This luxury ski chalet has a great location offering ease of access as well as amazing views. The entrance is just 200 metres from the Matterhorn Express Lift Station and four minutes from the centre of town. Turn off the main street into a tunnel, follow it to the end to reach an elevator and from the top of the elevator it's just a short climb up the interior staircase to your front door. . And a ski room inside the tunnel means you can simply kick off your boots and gear before you head inside.

Zermatt town centre is approximately a ten minute walk away and as it is a car-free resort which has a railway station, guests often arrive by train.

The nearest airport to Zermatt is Geneva, approximately three hours away.

Facilities

Wood-burning fireplace
Wifi
Ski and boot room
Balconies and terraces
TVs/DVD player
Nespresso coffee machine
Village and mountain views
Sauna (as part of en suite master)

