



## The Gotthard Suite Andermatt



### What we love...

We love the views of the Gotthard Massif through the apartments huge windows.

For your perfect deluxe ski getaway, The Gotthard Suite offers the most lavish accommodation at the world-renowned Chedi Hotel Andermatt. Crafted by Jean-Michel Gathy, the visionary architect behind some of the globe's most iconic luxury accommodations, The Chedi Andermatt stands as an extraordinary destination, with The Gotthard Suite as your unparalleled choice for luxury.

The suite itself, boasts expansive windows that reach up to the vaulted wooden ceiling, providing awe-inspiring views of the Gotthard Massif. The living area and bedroom showcase Swiss elegance with understated mastery, featuring warm wood and natural stone accents, sleek leather furnishings, and sumptuous linens. The ambiance is heightened by the freestanding suspended fireplace,

perfect for atmospheric evenings. The iPad-controlled lighting and an integrated Bose sound system ensure you can create the perfect mood whatever the occasion.

The generously sized bathrooms offer either spacious freestanding baths or rain showers, complete with underfloor heating for comfortable padding around. Stocked with opulent Aqua di Parma toiletries, all adding to the overall indulgence.

Access to The Chedi Andermatt's lavish spa and wellness area, coupled with its exceptional selection of fine dining restaurants and bars, makes The Gotthard Suite the premier venue for the ultimate luxury ski vacation, a pampering spa retreat, or even a romantic honeymoon in the heart of the Alps.





# The Gotthard Suite

## Rooms

The Gotthard Suite sleeps 6 + 4 guests across five bedrooms.

Bedroom 1  
Double bedroom with en-suite bathroom

Bedroom 2  
Double bedroom with en-suite bathroom

Bedroom 3  
Double bedroom with en-suite bathroom

Bedroom 4  
Bunk room with en-suite shower room

Bedroom 5  
Bunk room with en-suite shower room

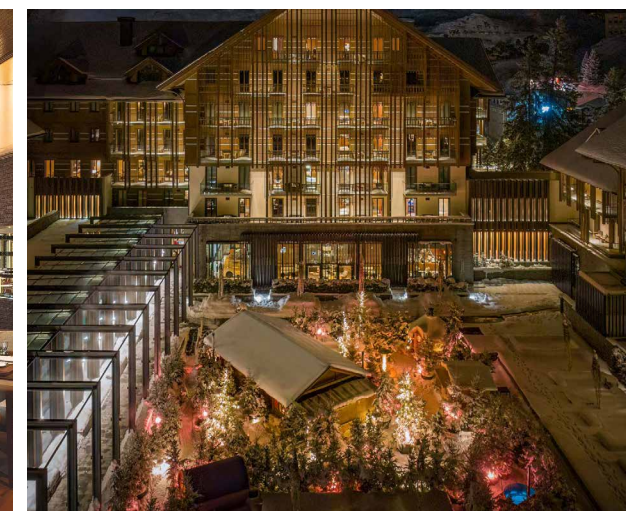
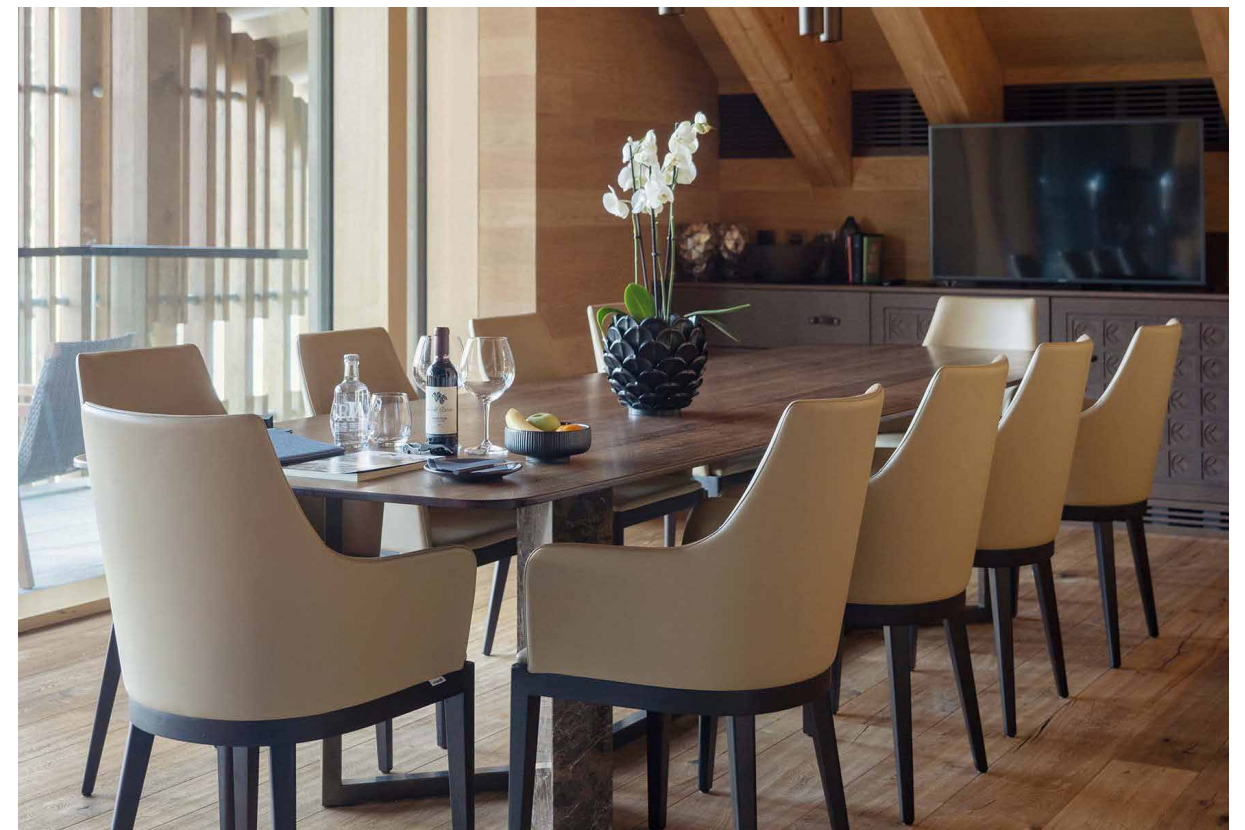
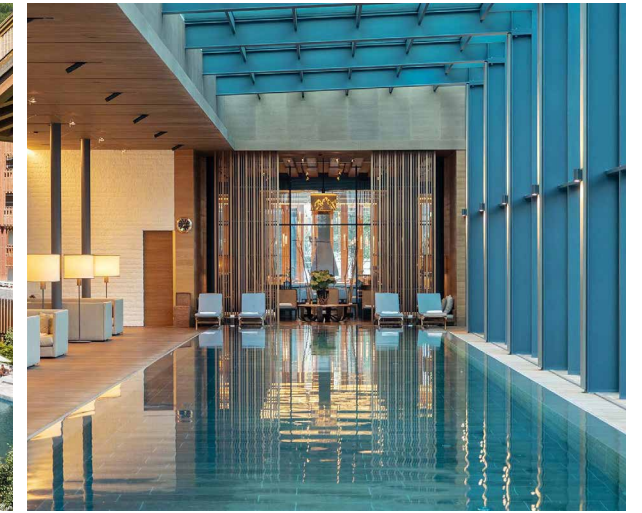
## Eating

The dining area within The Gotthard Suite exudes sophistication, providing an intimate setting to indulge in the truly spectacular food and beverages offered by the hotel. The suite also boasts its private wine cabinet, adding a touch of exclusivity. For those who prefer a hands-on approach, a fully equipped kitchen is at your disposal should you wish self cater.

Alternatively, immerse yourself in the wonderful ambiance of The Chedi Andermatt's restaurants. 'The Restaurant' presents a fusion of pan-European and Asian gastronomy, while the Michelin-starred 'The Japanese Restaurant' offers an exquisite selection of sushi, sashimi, tempura, and other Asian specialties to delight your palate.

For wine enthusiasts, the hotel features a private wine dining room where experts can lead a group through a delightful wine tasting evening showcasing vintage bottles, paired with gourmet snacks.

If the desire for convenience strikes, room service is available 24/7 from 'The Bar and Living Room,' ensuring that your culinary cravings are met around the clock.







# The Gotthard Suite

## Kids

As guests of The Gotthard Suite within the exclusive The Chedi Andermatt, you can enjoy access to a plethora of amenities, and this includes the younger members of the family.

For the winter enchantment, the hotel boasts a charming courtyard ice rink, providing children with the opportunity to skate to their heart's content. Additionally, there are striking indoor and outdoor pools for their aquatic enjoyment. For a more structured experience, the fantastic kids' club offers activities such as cookery classes and movie nights, catering to children aged 4 to 12.

The kids' club offers meals, or, children can join you at 'The Restaurant,' where a specially crafted children's menu is available to meet their culinary preferences.

## Location

Within the hotel, this luxury suite provides a haven for those seeking a Swiss ski holiday. Conveniently situated near the town centre and directly opposite the railway station—with trains to Zurich taking under two hours—the location is both accessible and idyllic. Complimentary transfers between Göschenen station, a mere 10-minute drive away, and the hotel are included in your stay.

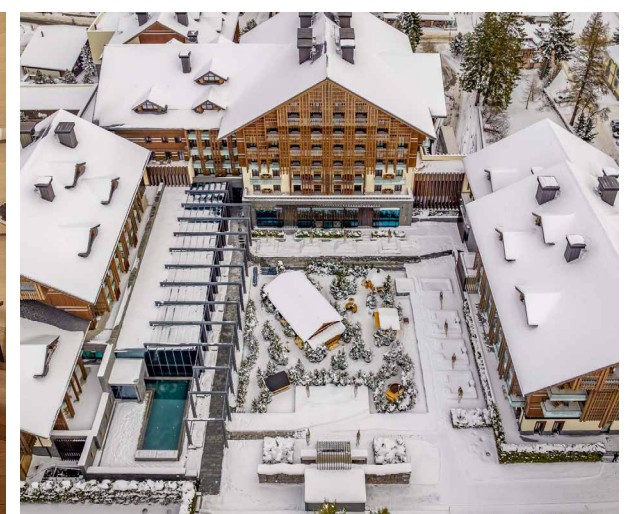
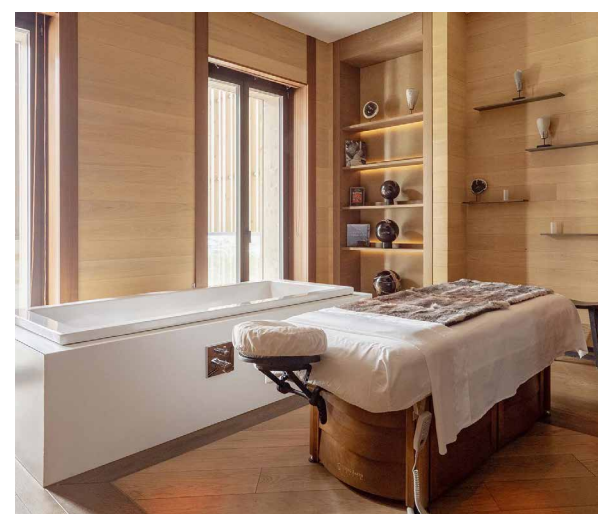
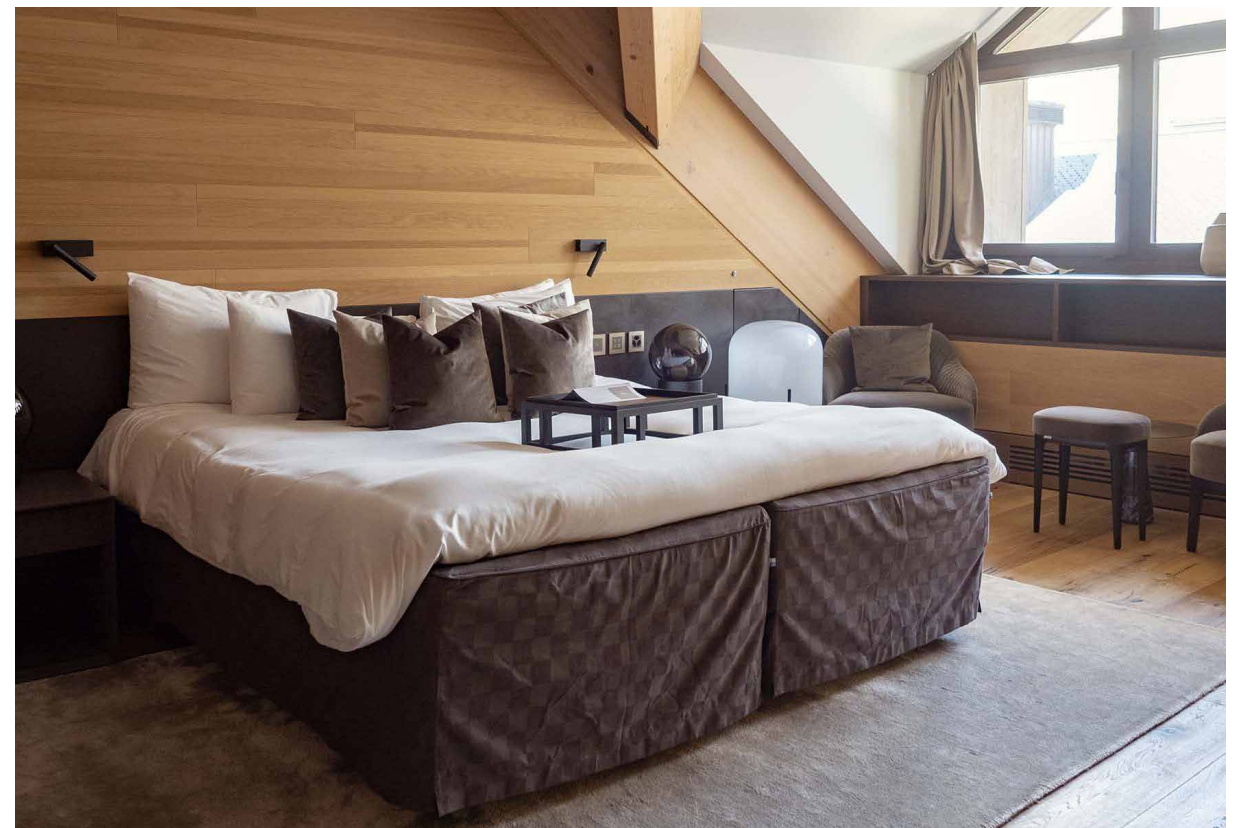
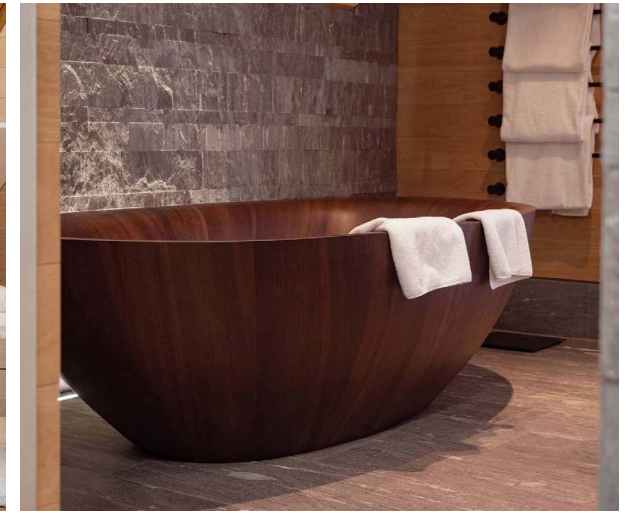
For avid skiers, the closest ski lifts are a short 5-10 minute walk, though the hotel offers a convenient shuttle service to swiftly transport you to and from the slopes. Transfers or private chauffeured limousines can be organised upon request from Zurich (1h 30m), Milan (2h), Lucerne, and Buochs airports, ensuring a luxurious and stress-free journey to this winter paradise.

## Staff

Firefly pre-arrival concierge service. Staff at The Chedi Andermatt are on hand to assist throughout your stay. Additional staff such as a private chef, nannies or massage therapists can be arranged on request.

## Facilities

- 35 metre indoor pool with glass roof
- 12m heated outdoor lap pool
- Fireplace
- Hamman
- Wifi
- Balcony
- Bose surround sound
- Private wine cabinet
- Climate control system
- CD/DVD player (on request)
- Finnish and bio saunas
- Hotel gym with state-of-the-art fitness equipment
- Hot and cold plunge pools
- Flat screen TVs & on demand films
- Access to The Chedi Andermatt facilities



To Book, call +44 (0)203 432 7784

[www.firefly-collection.com](http://www.firefly-collection.com)